

Mr. Dickson's Band Method

Book Two

Tuba

www.JustinDickson.com/Band
revised January 21, 2019

"Strategies That Work When Learning New Music"

Read before you play

- Before you play, read through the music and say the letter names of the notes out loud.
- Before you play, tizzle the rhythms. Tap your foot while you do it, to keep a steady beat.

Set up for a good first note

- Finger the first note before you start to play the song, before you breathe.
- Breathe on the beat before you start. Breathe together to play together.

While you are playing

- Tap your foot gently with the beat while you play, and count your rests.
- Look ahead while you play, so you are ready for the next thing you have to play.

Use technology to help you learn

- When practicing at home, use a tuner app like Bandmate Chromatic Tuner (free version) to check if you are playing the right notes.
- When practicing at home, use a metronome app like Tempo by Frozen Ape (free version) to make sure you are keeping a steady beat.

When you get stuck on a hard part

- First of all, it's not hard, it's just new. Keep trying, you'll get better.
- Find the notes that are difficult for you, and just play them over and over. Break it down to just 2 or 3 notes at a time, and play them as much as you can. Don't try to play the whole song yet if you really just need to work on a few tricky notes in the middle.
- Slowwwwwww downnnnnnnnn. Play it really, really, really slowly. Speed will come later.
- Say the letter names of the notes out loud. Don't just think it, you have to say it out loud or it does not help.
- Tizzle the rhythms, or say the rhythms using a "dah" syllable.
- It's not about trying hard enough, it's about trying often enough. Don't try it 2 or 3 times and then give up. Your body needs more reps to learn new things. Try it 10-15 times, then move on to something else and come back to it later.
- Ask for help! Your teacher gets paid the big bucks to help you. Use them!

10.01 "Back To School Blues"

Three staves of musical notation in bass clef, 4/4 time, and B-flat major. The first staff contains a sequence of eighth and quarter notes. The second staff continues the melody with a repeat sign at the end. The third staff concludes the piece with a repeat sign.

10.02 New note for clarinets only

A single staff of musical notation in bass clef, 4/4 time, and B-flat major, featuring a single quarter note.

10.03 Clarinet pinky power!

A single staff of musical notation in bass clef, 4/4 time, and B-flat major, featuring a sequence of eighth notes.

10.04 Five note scale

A single staff of musical notation in bass clef, 4/4 time, and B-flat major, featuring a five-note scale.

10.05 "Jingle Bells"

Two staves of musical notation in bass clef, 4/4 time, and B-flat major, featuring a sequence of eighth notes.

10.06 "Four Note Blues" -Dickson

Musical notation for "Four Note Blues" in bass clef, 4/4 time. The piece consists of three staves. The first two staves contain a melody of eighth and quarter notes. The third staff begins with two measures of rests, followed by a continuation of the melody.

10.07 "Happy Birthday"

Musical notation for "Happy Birthday" in bass clef, 3/4 time. The piece consists of two staves. The first staff starts with two measures of rests, followed by a melody of quarter and eighth notes. The second staff continues the melody, ending with a fermata over a half note.

10.08 "Banana Boat Song"

Fine

Musical notation for "Banana Boat Song" in bass clef, 4/4 time. The piece consists of two staves. The first staff contains a rhythmic melody of eighth and quarter notes. The second staff continues the melody, ending with a fermata over a half note.

D.C. al Fine

11.01 Dynamics

Musical notation for dynamics exercise 11.01. The staff is in bass clef, 4/4 time, and B-flat major. It consists of four measures, each containing a single half note on the same pitch. The dynamics are indicated below the notes: *p* (piano), *mp* (mezzo-piano), *mf* (mezzo-forte), and *f* (forte).

11.02 Crescendo

Musical notation for crescendo exercise 11.02. The staff is in bass clef, 4/4 time, and B-flat major. It consists of four measures, each containing a single half note on the same pitch. The dynamics are indicated below the notes: *p*, *mp*, *mf*, and *f*. Between each measure, there is a crescendo hairpin symbol (two lines meeting at a point) pointing to the right, indicating a gradual increase in volume.

11.03 Decrescendo

Musical notation for decrescendo exercise 11.03. The staff is in bass clef, 4/4 time, and B-flat major. It consists of four measures, each containing a single half note on the same pitch. The dynamics are indicated below the notes: *f*, *mf*, *mp*, and *p*. Between each measure, there is a decrescendo hairpin symbol (two lines meeting at a point) pointing to the left, indicating a gradual decrease in volume.

11.04 Etude

Musical notation for etude 11.04. The staff is in bass clef, 4/4 time, and B-flat major. It consists of eight measures. The first four measures are marked *mp* and the last four are marked *f*. The music features eighth and quarter notes with slurs. A crescendo hairpin symbol is placed under the first four measures, and a decrescendo hairpin symbol is placed under the last four measures.

12.01 Dotted-quarter notes

Musical notation for dotted-quarter notes exercise 12.01. The staff is in bass clef, 4/4 time, and B-flat major. It consists of four measures. The first measure contains a dotted quarter note followed by an eighth note. The second measure contains a dotted quarter note followed by an eighth note. The third and fourth measures each contain a single dotted quarter note.

12.02 Etude

Musical notation for etude 12.02. The staff is in bass clef, 4/4 time, and B-flat major. It consists of four measures, each containing a single dotted quarter note on the same pitch.

12.03 "Ode To Joy" by Ludwig Van Beethoven

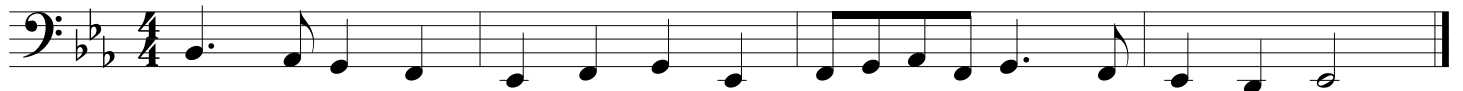


Fine

D.S. al Fine



12.04 "Deck The Halls"



12.05 "U.S. Marine Corps Hymn"



12.06 "Dotted-Quarter Blues" (swing) - Dickson

F#

13.01 New note!

C

13.02 Going up

13.03 Five-note scale

13.04 "Jingle Bells"

13.05 "This Old Man"

Two staves of musical notation in bass clef, 3/4 time signature, and B-flat major key signature. The first staff contains a sequence of eighth and quarter notes. The second staff continues the melody with some beamed eighth notes and quarter notes.

14.01 Clarinet high C

A single staff of musical notation in bass clef, 4/4 time signature, and B-flat major key signature. It features a series of quarter notes on the staff, with some notes marked with a small square above them, indicating specific fingerings or articulation.

14.02 Clarinet high D

A single staff of musical notation in bass clef, 4/4 time signature, and B-flat major key signature. It features a series of quarter notes on the staff, with some notes marked with a small square above them, indicating specific fingerings or articulation.

14.03 Clarinet pinky power

A single staff of musical notation in bass clef, 4/4 time signature, and B-flat major key signature. It features a series of quarter notes on the staff, with some notes marked with a small square above them, indicating specific fingerings or articulation.

14.04 New note!

A single staff of musical notation in bass clef, 4/4 time signature, and B-flat major key signature. It features a single quarter note on the staff.

D

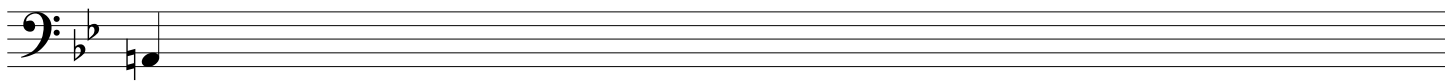
14.05 Going up

A single staff of musical notation in bass clef, 4/4 time signature, and B-flat major key signature. It features a series of quarter notes on the staff, with some notes marked with a small square above them, indicating specific fingerings or articulation.

14.06 "Mary Had A Little Lamb"

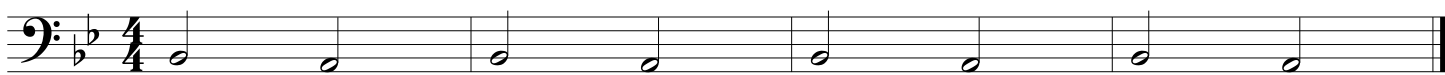


14.07 One more new note for clarinets



A

14.08 Other pinky power!



14.09 Four-note scale

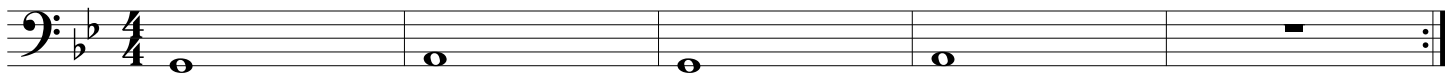


A B \flat C D C B \flat A

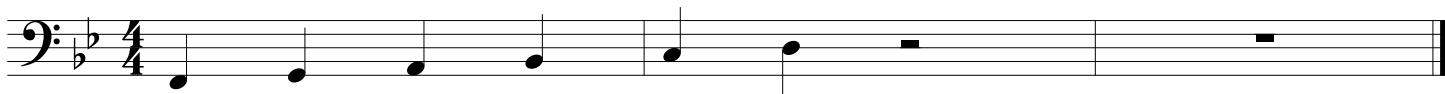
14.10 Crossing the break



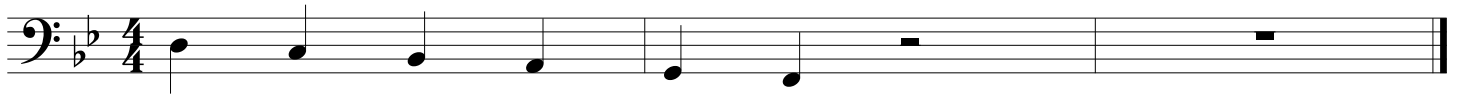
14.11 Crossing the break



14.12 Take it slowly



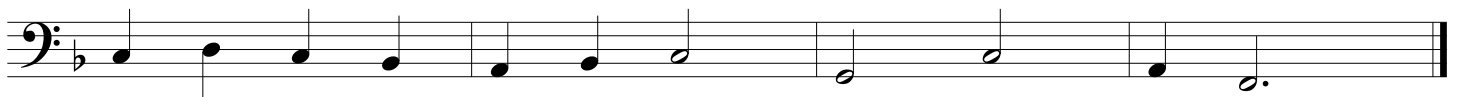
14.13 You can do it



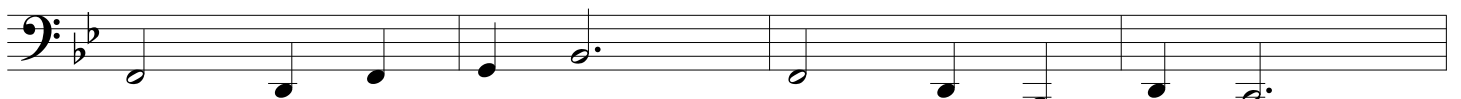
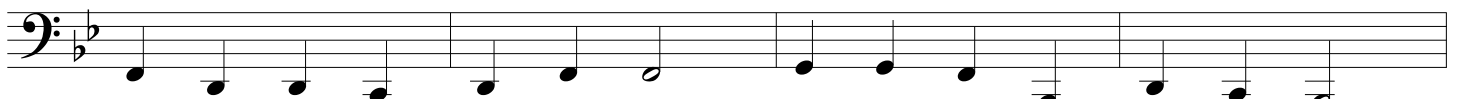
15.01 "Twinkle Twinkle"



15.02 "London Bridge"



15.03 "Jesus Loves Me"



15.04 "This Old Man"

Two staves of musical notation in bass clef, key of B-flat major, and 4/4 time. The first staff contains the first four measures, and the second staff contains the next four measures. The melody consists of eighth and quarter notes.

15.05 "Amazing Grace"

Two staves of musical notation in bass clef, key of B-flat major, and 3/4 time. The first staff contains the first four measures, and the second staff contains the next four measures. The melody features a mix of quarter and eighth notes.

15.06 New note!

A single staff of musical notation in bass clef, key of B-flat major, and 4/4 time. It shows a single note on the second line (E) followed by two measures of rests. The letter 'E' is written below the first note.

15.07 "Yankee Doodle"

A single staff of musical notation in bass clef, key of B-flat major, and 4/4 time. The melody is a continuous eighth-note pattern.

15.08 "Head Shoulders Knees And Toes"

Two staves of musical notation in bass clef, key of B-flat major, and 4/4 time. The first staff contains the first four measures, and the second staff contains the next four measures. The melody consists of quarter and eighth notes.

15.09 "My Country 'Tis Of Thee"

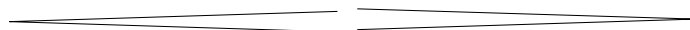
Three staves of musical notation in bass clef, 3/4 time signature, and one flat (B-flat). The first staff contains the first line of music. The second staff contains the second line. The third staff contains the third line, ending with a double bar line.

15.10 "America The Beautiful"

Four staves of musical notation in bass clef, 4/4 time signature, and two flats (B-flat and E-flat). The first staff begins with a whole rest followed by the first line of music. The second staff contains the second line. The third staff contains the third line, with a 'B' marking below it. The fourth staff contains the fourth line, ending with a double bar line.

15.11 Etude

Two staves of musical notation in bass clef, 4/4 time signature, and one flat (B-flat). The first staff contains the first line of music. The second staff contains the second line, ending with a double bar line.



15.12 "Auld Lang Syne"

Two staves of musical notation for "Auld Lang Syne" in bass clef, 4/4 time. The first staff begins with a whole rest followed by a series of eighth and quarter notes. The second staff continues the melody with similar rhythmic patterns, ending with a whole note.

15.13 "Eine Kleine Nachtmusik" melody, W.A. Mozart

Four staves of musical notation for the melody of "Eine Kleine Nachtmusik" in bass clef, 4/4 time. The first staff starts with a forte (*f*) dynamic. The second staff continues with eighth notes. The third staff features a crescendo leading to a piano (*p*) dynamic. The fourth staff concludes the melody with a final cadence.

15.14 "Anchors Aweigh" (U.S. Navy Song)

Three staves of musical notation for "Anchors Aweigh" in bass clef, 4/4 time. The first staff starts with a whole note. The second staff continues with eighth notes and a slur. The third staff features accents (>) on specific notes and ends with a whole note.

15.15 Chapter Fifteen Blues (swing)

Three staves of musical notation in bass clef, 4/4 time, key of B-flat major. The first two staves are identical. The first staff begins with a bass clef, a key signature of two flats, and a 4/4 time signature. The melody consists of quarter notes and eighth notes, with some notes beamed together. The third staff continues the melody and ends with a double bar line.

16.01 Etude: Phrasing

Two staves of musical notation in bass clef, 4/4 time, key of B-flat major. The first staff begins with a bass clef, a key signature of two flats, and a 4/4 time signature. The melody starts with a mezzo-piano (*mp*) dynamic marking. The notes are mostly quarter notes and eighth notes, with some beaming and phrasing slurs. The second staff continues the melody and ends with a double bar line. Below the staves are two horizontal lines with a slight upward curve, likely indicating a performance technique or breath mark.

16.02 Etude: Phrasing

Slowly

Two staves of musical notation in bass clef, 4/4 time, key of B-flat major. The first staff begins with a bass clef, a key signature of two flats, and a 4/4 time signature. The melody starts with a mezzo-piano (*mp*) dynamic marking. The notes are mostly quarter notes and eighth notes, with some beaming and phrasing slurs. The second staff continues the melody and ends with a double bar line. Below the staves are two horizontal lines with a slight upward curve, likely indicating a performance technique or breath mark.

16.03 Etude: Phrasing and Articulation

*Hold every note out all the way until the next note starts.
Tap your foot while you play.*

Musical notation for Etude 16.03: Phrasing and Articulation. The piece is in bass clef, 4/4 time, and one flat. It features two staves. The first staff contains two measures: the first measure has a dotted quarter note, an eighth note, a quarter note, and a half note, all with accents and a dynamic marking of 'f'; the second measure has a whole rest followed by a dotted quarter note, an eighth note, and a quarter note, all with accents. The second staff continues with a half note, a quarter note, and a quarter note, all with accents, followed by a quarter note, an eighth note, and a quarter note, all with accents, and finally a quarter note with an accent.

16.04 Etude: Articulation

Musical notation for Etude 16.04: Articulation. The piece is in bass clef, 4/4 time, and one flat. It consists of a single staff with a melody of eighth and quarter notes. The melody is characterized by slurs and accents, emphasizing articulation.

16.05 Etude: Ostinato

Musical notation for Etude 16.05: Ostinato. The piece is in bass clef, 4/4 time, and one flat. It consists of two staves, both featuring a continuous eighth-note ostinato pattern. The first staff starts with a quarter rest followed by the eighth-note pattern, while the second staff starts directly with the eighth-note pattern.