

Mr. Dickson's Band Method

Book Two

Trombone
Baritone

www.JustinDickson.com/Band
revised January 21, 2019

"Strategies That Work When Learning New Music"

Read before you play

- Before you play, read through the music and say the letter names of the notes out loud.
- Before you play, tizzle the rhythms. Tap your foot while you do it, to keep a steady beat.

Set up for a good first note

- Finger the first note before you start to play the song, before you breathe.
- Breathe on the beat before you start. Breathe together to play together.

While you are playing

- Tap your foot gently with the beat while you play, and count your rests.
- Look ahead while you play, so you are ready for the next thing you have to play.

Use technology to help you learn

- When practicing at home, use a tuner app like Bandmate Chromatic Tuner (free version) to check if you are playing the right notes.
- When practicing at home, use a metronome app like Tempo by Frozen Ape (free version) to make sure you are keeping a steady beat.

When you get stuck on a hard part

- First of all, it's not hard, it's just new. Keep trying, you'll get better.
- Find the notes that are difficult for you, and just play them over and over. Break it down to just 2 or 3 notes at a time, and play them as much as you can. Don't try to play the whole song yet if you really just need to work on a few tricky notes in the middle.
- Slowwwwwww downnnnnnnnn. Play it really, really, really slowly. Speed will come later.
- Say the letter names of the notes out loud. Don't just think it, you have to say it out loud or it does not help.
- Tizzle the rhythms, or say the rhythms using a "dah" syllable.
- It's not about trying hard enough, it's about trying often enough. Don't try it 2 or 3 times and then give up. Your body needs more reps to learn new things. Try it 10-15 times, then move on to something else and come back to it later.
- Ask for help! Your teacher gets paid the big bucks to help you. Use them!

10.01 "Back To School Blues"

Three staves of musical notation in bass clef, 4/4 time, and B-flat major. The first staff contains a sequence of eighth and quarter notes. The second staff continues the melody with a quarter rest. The third staff concludes the piece with a double bar line and repeat dots.

10.02 New note for clarinets only

A single staff of musical notation in bass clef, B-flat major, showing a single quarter note on the second line of the staff.

10.03 Clarinet pinky power!

A single staff of musical notation in bass clef, 4/4 time, and B-flat major. It features a sequence of eighth notes followed by a quarter note and a quarter rest, ending with a double bar line and repeat dots.

10.04 Five note scale

A single staff of musical notation in bass clef, 4/4 time, and B-flat major. It shows a five-note scale: B-flat, C, D, E-flat, F, followed by a quarter rest and a double bar line with repeat dots.

10.05 "Jingle Bells"

Two staves of musical notation in bass clef, 4/4 time, and B-flat major. The notation consists of eighth and quarter notes, capturing the rhythmic pattern of the 'Jingle Bells' melody.

10.06 "Four Note Blues" -Dickson

Musical notation for "Four Note Blues" in bass clef, 4/4 time, B-flat major. The piece consists of three staves of music. The first two staves show a sequence of eighth notes and quarter notes. The third staff has two measures of rests followed by a final phrase of eighth and quarter notes.

10.07 "Happy Birthday"

Musical notation for "Happy Birthday" in bass clef, 3/4 time, B-flat major. The piece consists of two staves of music. The first staff starts with two measures of rests followed by eighth and quarter notes. The second staff continues with eighth and quarter notes, ending with a half note.

10.08 "Banana Boat Song"

Musical notation for "Banana Boat Song" in bass clef, 4/4 time, B-flat major. The piece consists of two staves of music. The first staff ends with the word *Fine*. The second staff begins with *D.C. al Fine* and continues with eighth and quarter notes.

11.01 Dynamics

A musical staff in bass clef with a 4/4 time signature. It contains four measures, each with a single half note. The notes are G2, F2, E2, and D2. Below the staff, the dynamic markings *p*, *mp*, *mf*, and *f* are placed under each note respectively.

11.02 Crescendo

A musical staff in bass clef with a 4/4 time signature. It contains four measures, each with a single half note. The notes are G2, F2, E2, and D2. Below the staff, the dynamic markings *p*, *mp*, *mf*, and *f* are placed under each note. Between each pair of notes, there is a wedge-shaped symbol pointing to the right, indicating a crescendo.

11.03 Decrescendo

A musical staff in bass clef with a 4/4 time signature. It contains four measures, each with a single half note. The notes are G2, F2, E2, and D2. Below the staff, the dynamic markings *f*, *mf*, *mp*, and *p* are placed under each note. Between each pair of notes, there is a wedge-shaped symbol pointing to the left, indicating a decrescendo.

11.04 Etude

A musical staff in bass clef with a 4/4 time signature. It contains four measures of music. The first measure has a half note G2. The second measure has a quarter note F2, a quarter note E2, and a half note D2. The third measure has a quarter note G2, a quarter note F2, a quarter note E2, and a half note D2. The fourth measure has a quarter note G2, a quarter note F2, a quarter note E2, and a half note D2. Below the staff, the dynamic markings *mp*, *f*, and *mp* are placed under the first, second, and fourth measures respectively. There are wedge-shaped symbols indicating a crescendo from *mp* to *f* and a decrescendo from *f* to *mp*.

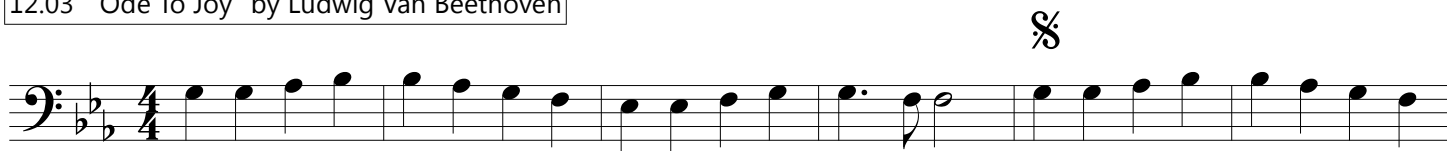
12.01 Dotted-quarter notes

A musical staff in bass clef with a 4/4 time signature. It contains four measures. The first measure has a dotted quarter note G2 followed by an eighth rest. The second measure has a dotted quarter note F2 followed by an eighth rest. The third measure has a dotted quarter note E2 followed by an eighth rest. The fourth measure has a dotted quarter note D2 followed by an eighth rest.

12.02 Etude

A musical staff in bass clef with a 4/4 time signature. It contains four measures. The first measure has a dotted quarter note G2 followed by an eighth rest, then a quarter note F2. The second measure has a dotted quarter note E2 followed by an eighth rest, then a quarter note D2. The third measure has a dotted quarter note G2 followed by an eighth rest, then a quarter note F2. The fourth measure has a dotted quarter note G2 followed by an eighth rest, then a quarter note G2.

12.03 "Ode To Joy" by Ludwig Van Beethoven



Fine

D.S. al Fine



12.04 "Deck The Halls"



12.05 "U.S. Marine Corps Hymn"



12.06 "Dotted-Quarter Blues" (swing) - Dickson

Musical notation for "Dotted-Quarter Blues" in bass clef, 4/4 time, key of Bb. The piece consists of three staves of music. The first two staves are identical. The third staff contains a chromatic scale: G2, A2, Bb2, C3, D3, E3, F#3, G3, A3, Bb3, C4, D4, E4, F4, G4. The F# note is marked with a sharp sign.

F#

13.01 New note!

Musical notation for "New note!" in bass clef, 4/4 time, key of Bb. It shows a single quarter note on the C line of the staff.

C

13.02 Going up

Musical notation for "Going up" in bass clef, 4/4 time, key of Bb. It shows a sequence of notes: G2, A2, Bb2, C3, D3, E3, F3, G3, A3, Bb3, C4, D4, E4, F4, G4, A4, Bb4, C5, followed by a whole rest.

13.03 Five-note scale

Musical notation for "Five-note scale" in bass clef, 4/4 time, key of Bb. It shows a five-note scale: G2, A2, Bb2, C3, D3, followed by a whole rest.

13.04 "Jingle Bells"

Musical notation for "Jingle Bells" in bass clef, 4/4 time, key of Bb. It shows two staves of music. The first staff contains the melody: G2, A2, Bb2, C3, D3, E3, F3, G3, A3, Bb3, C4, D4, E4, F4, G4, A4, Bb4, C5. The second staff contains the accompaniment: G2, A2, Bb2, C3, D3, E3, F3, G3, A3, Bb3, C4, D4, E4, F4, G4, A4, Bb4, C5.

13.05 "This Old Man"

Musical notation for "This Old Man" in bass clef, 3/4 time, B-flat major. The melody consists of a sequence of eighth and quarter notes: G2, A2, Bb2, G2, F2, E2, D2, C2, Bb1, A1, G1, F1, E1, D1, C1, Bb0, A0, G0.

14.01 Clarinet high C

Musical notation for Clarinet high C in bass clef, 4/4 time, B-flat major. The melody consists of half notes: G2, A2, Bb2, G2, F2, E2, D2, C2, Bb1, A1, G1, F1, E1, D1, C1, Bb0, A0, G0.

14.02 Clarinet high D

Musical notation for Clarinet high D in bass clef, 4/4 time, B-flat major. The melody consists of half notes: G2, A2, Bb2, G2, F2, E2, D2, C2, Bb1, A1, G1, F1, E1, D1, C1, Bb0, A0, G0.

14.03 Clarinet pinky power

Musical notation for Clarinet pinky power in bass clef, 4/4 time, B-flat major. The melody consists of half notes: G2, A2, Bb2, G2, F2, E2, D2, C2, Bb1, A1, G1, F1, E1, D1, C1, Bb0, A0, G0.

14.04 New note!

Musical notation for New note! in bass clef, B-flat major. The melody consists of a single quarter note: G2.

D

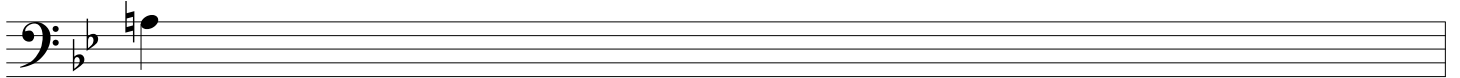
14.05 Going up

Musical notation for Going up in bass clef, 4/4 time, B-flat major. The melody consists of quarter notes: G2, A2, Bb2, G2, F2, E2, D2, C2, Bb1, A1, G1, F1, E1, D1, C1, Bb0, A0, G0.

14.06 "Mary Had A Little Lamb"

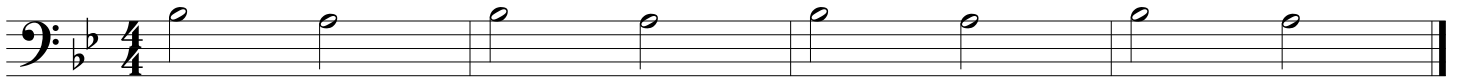


14.07 One more new note for clarinets

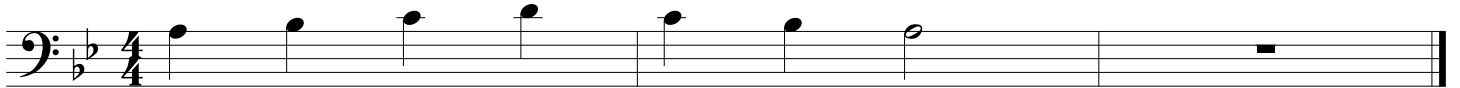


A

14.08 Other pinky power!



14.09 Four-note scale

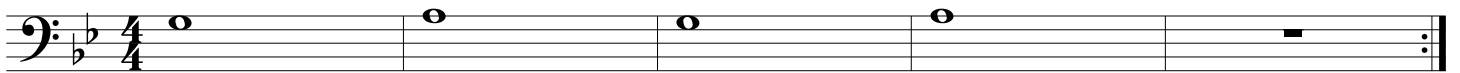


A Bb C D C Bb A

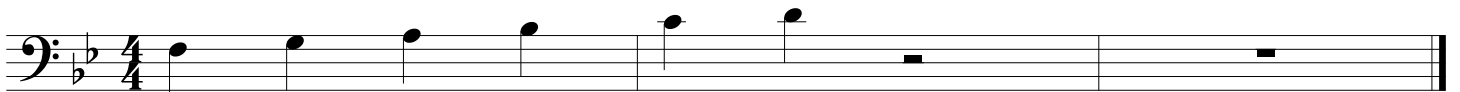
14.10 Crossing the break



14.11 Crossing the break



14.12 Take it slowly



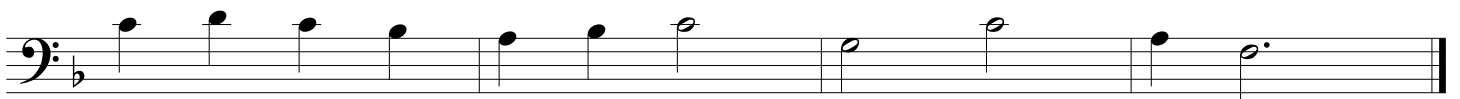
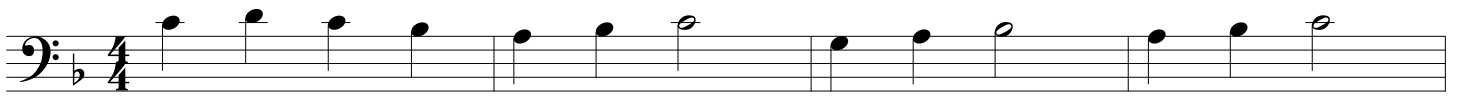
14.13 You can do it



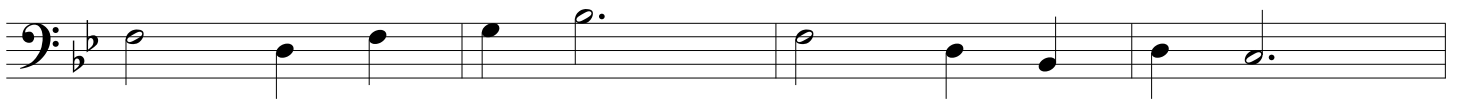
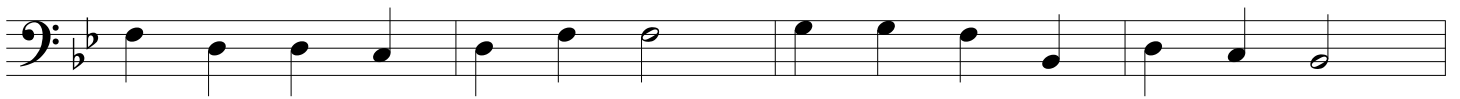
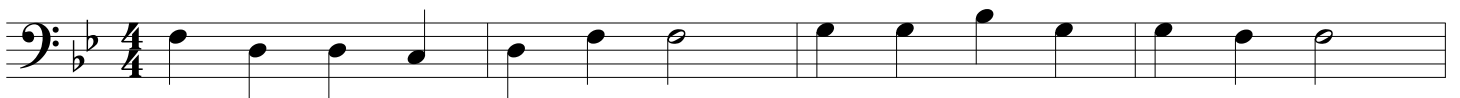
15.01 "Twinkle Twinkle"



15.02 "London Bridge"



15.03 "Jesus Loves Me"



15.04 "This Old Man"

Two staves of musical notation in bass clef, key of B-flat major. The first staff contains the first four measures, and the second staff contains the next four measures. The melody consists of eighth and quarter notes.

15.05 "Amazing Grace"

Two staves of musical notation in bass clef, key of B-flat major, 3/4 time signature. The first staff contains the first four measures, and the second staff contains the next four measures. The melody features a mix of quarter, eighth, and half notes, with a long note in the final measure of the second staff.

15.06 New note!

A single staff of musical notation in bass clef, key of B-flat major. It shows a whole note on the E line (E4) followed by two measures of rests. The letter 'E' is printed below the first note.

15.07 "Yankee Doodle"

A single staff of musical notation in bass clef, key of B-flat major, 4/4 time signature. The melody is a continuous eighth-note pattern.

15.08 "Head Shoulders Knees And Toes"

Two staves of musical notation in bass clef, key of B-flat major, 4/4 time signature. The first staff contains the first four measures, and the second staff contains the next four measures. The melody consists of quarter and eighth notes.

15.09 "My Country 'Tis Of Thee"

Three staves of music in bass clef, 3/4 time, key of B-flat major. The first staff contains the first six measures. The second staff contains the next six measures. The third staff contains the final six measures, ending with a double bar line.

15.10 "America The Beautiful"

Four staves of music in bass clef, 4/4 time, key of B-flat major. The first staff contains the first six measures. The second staff contains the next six measures. The third staff contains the next six measures, with a 'B' marking above the first measure. The fourth staff contains the final six measures, ending with a double bar line.

15.11 Etude

Two staves of music in bass clef, 4/4 time, key of B-flat major. The first staff contains the first six measures. The second staff contains the next six measures, ending with a double bar line.



15.12 "Auld Lang Syne"

Two staves of musical notation for "Auld Lang Syne" in bass clef, 4/4 time. The key signature has one flat (B-flat). The first staff begins with a whole rest followed by a quarter note G2, then a dotted quarter note F2, and a quarter note E2. The second staff continues with a dotted quarter note D2, a quarter note C2, a quarter note B1, and a quarter note A1. The piece concludes with a whole note G1.

15.13 "Eine Kleine Nachtmusik" melody, W.A. Mozart

Five staves of musical notation for the melody of "Eine Kleine Nachtmusik" in bass clef, 4/4 time. The key signature has one flat (B-flat). The first staff starts with a forte (*f*) dynamic and features a dotted quarter note G2, a quarter note F2, a quarter note E2, and a quarter note D2. The second staff continues with a dotted quarter note C2, a quarter note B1, a quarter note A1, and a quarter note G1. The third staff contains a series of eighth notes: G2, F2, E2, D2, C2, B1, A1, G1. The fourth staff features a crescendo hairpin leading to a piano (*p*) dynamic, with a dotted quarter note G2, a quarter note F2, a quarter note E2, and a quarter note D2. The fifth staff concludes with a dotted quarter note C2, a quarter note B1, a quarter note A1, and a quarter note G1.

15.14 "Anchors Aweigh" (U.S. Navy Song)

Three staves of musical notation for "Anchors Aweigh" in bass clef, 4/4 time. The key signature has two flats (B-flat and E-flat). The first staff begins with a whole note G2, followed by a quarter note F2, a quarter note E2, and a quarter note D2. The second staff continues with a dotted quarter note C2, a quarter note B1, a quarter note A1, and a quarter note G1. The third staff features a dotted quarter note G2, a quarter note F2, a quarter note E2, and a quarter note D2, with accents (>) over the G2 and F2 notes.

15.15 Chapter Fifteen Blues (swing)

Three staves of musical notation in bass clef, 4/4 time, key of B-flat major. The first two staves are identical. The third staff concludes the piece with a double bar line. The notation includes eighth and quarter notes, rests, and accents.

16.01 Etude: Phrasing

Two staves of musical notation in bass clef, 4/4 time, key of B-flat major. The first staff begins with a *mp* dynamic marking. The notation features quarter and eighth notes with slurs. Below the second staff are two horizontal lines with a slight upward curve, likely indicating phrasing or breath marks.

16.02 Etude: Phrasing

Slowly

Two staves of musical notation in bass clef, 4/4 time, key of B-flat major. The first staff begins with a *mp* dynamic marking. The notation consists of eighth-note patterns with slurs. Below the second staff are two horizontal lines with a slight upward curve, likely indicating phrasing or breath marks.

16.03 Etude: Phrasing and Articulation

*Hold every note out all the way until the next note starts.
Tap your foot while you play.*

16.03 Etude: Phrasing and Articulation

16.04 Etude: Articulation

16.04 Etude: Articulation

16.05 Etude: Ostinato

16.05 Etude: Ostinato