

# Mr. Dickson's Band Method

## Book Two

Flute  
Bells

[www.JustinDickson.com/Band](http://www.JustinDickson.com/Band)  
revised February 18, 2017

### "Strategies That Work When Learning New Music"

#### Read before you play

-----

- Before you play, read through the music and say the letter names of the notes out loud.
- Before you play, tizzle the rhythms. Tap your foot while you do it, to keep a steady beat.

#### Set up for a good first note

-----

- Finger the first note before you start to play the song, before you breathe.
- Breathe on the beat before you start. Breathe together to play together.

#### While you are playing

-----

- Tap your foot gently with the beat while you play, and count your rests.
- Look ahead while you play, so you are ready for the next thing you have to play.

#### Use technology to help you learn

-----

- When practicing at home, use a tuner app like Bandmate Chromatic Tuner (free version) to check if you are playing the right notes.
- When practicing at home, use a metronome app like Tempo by Frozen Ape (free version) to make sure you are keeping a steady beat.

#### When you get stuck on a hard part

-----

- First of all, it's not hard, it's just new. Keep trying, you'll get better.
- Find the notes that are difficult for you, and just play them over and over. Break it down to just 2 or 3 notes at a time, and play them as much as you can. Don't try to play the whole song yet if you really just need to work on a few tricky notes in the middle.
- Slowwwwwww downnnnnnnn. Play it really, really, really slowly. Speed will come later.
- Say the letter names of the notes out loud. Don't just think it, you have to say it out loud or it does not help.
- Tizzle the rhythms, or say the rhythms using a "dah" syllable.
- It's not about trying hard enough, it's about trying often enough. Don't try it 2 or 3 times and then give up. Your body needs more reps to learn new things. Try it 10-15 times, then move on to something else and come back to it later.
- Ask for help! Your teacher gets paid the big bucks to help you. Use them!



10.06 "Four Note Blues" -Dickson

Musical notation for "Four Note Blues" - Dickson. The piece is in 4/4 time and B-flat major. It consists of three staves of music. The first two staves show a melodic line with eighth and quarter notes. The third staff shows a similar melodic line with some rests.

10.07 "Happy Birthday"

Musical notation for "Happy Birthday". The piece is in 3/4 time and B-flat major. It consists of two staves of music. The first staff shows the melody with quarter and eighth notes. The second staff shows a similar melodic line with some rests.

10.08 "Banana Boat Song"

Musical notation for "Banana Boat Song". The piece is in 4/4 time and B-flat major. It consists of two staves of music. The first staff shows the melody with quarter and eighth notes. The second staff shows a similar melodic line with some rests. The word "Fine" is written above the first staff, and "D.C. al Fine" is written below the second staff.

11.01 Dynamics

Musical notation for dynamics exercise 11.01. The staff is in treble clef, key of B-flat major, and 4/4 time. It consists of four measures, each containing a single half note. The notes are G3, F3, E3, and D3. The dynamics are marked below each note: *p*, *mp*, *mf*, and *f*.

11.02 Crescendo

Musical notation for crescendo exercise 11.02. The staff is in treble clef, key of B-flat major, and 4/4 time. It consists of four measures, each containing a single half note. The notes are G3, F3, E3, and D3. The dynamics are marked below each note: *p*, *mp*, *mf*, and *f*. Slanted lines between the notes indicate a crescendo from *p* to *f*.

11.03 Decrescendo

Musical notation for decrescendo exercise 11.03. The staff is in treble clef, key of B-flat major, and 4/4 time. It consists of four measures, each containing a single half note. The notes are G3, F3, E3, and D3. The dynamics are marked below each note: *f*, *mf*, *mp*, and *p*. Slanted lines between the notes indicate a decrescendo from *f* to *p*.

11.04 Etude

Musical notation for etude 11.04. The staff is in treble clef, key of B-flat major, and 4/4 time. It consists of four measures. The first measure contains a half note G3. The second measure contains a quarter note F3, a quarter note E3, and a half note D3. The third measure contains a quarter note G3, a quarter note F3, a quarter note E3, and a half note D3. The fourth measure contains a quarter note G3, a quarter note F3, a quarter note E3, and a half note D3. The dynamics are marked below the first and last notes: *mp* and *mp*. Slanted lines indicate a crescendo from *mp* to *f* in the second measure and a decrescendo from *f* to *mp* in the fourth measure.

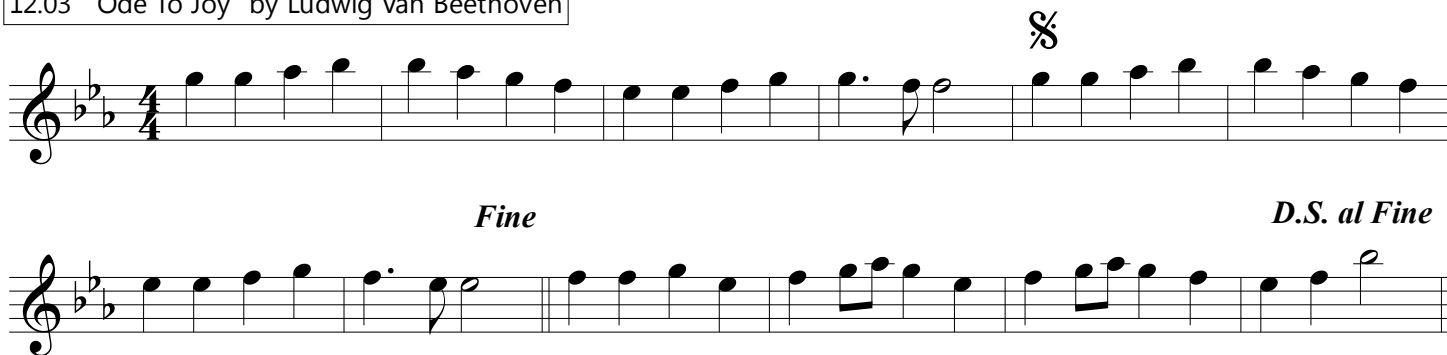
12.01 Dotted-quarter notes

Musical notation for dotted-quarter notes exercise 12.01. The staff is in treble clef, key of B-flat major, and 4/4 time. It consists of four measures. The first measure contains a dotted quarter note G3, a quarter note F3, and a half note E3. The second measure contains a dotted quarter note D3, a quarter note C3, and a half note B2. The third and fourth measures each contain a whole rest.

12.02 Etude

Musical notation for etude 12.02. The staff is in treble clef, key of B-flat major, and 4/4 time. It consists of four measures. The first measure contains a dotted quarter note G3, a quarter note F3, and a half note E3. The second measure contains a dotted quarter note D3, a quarter note C3, and a half note B2. The third measure contains a dotted quarter note G3, a quarter note F3, and a half note E3. The fourth measure contains a dotted quarter note D3, a quarter note C3, and a half note B2.

12.03 "Ode To Joy" by Ludwig Van Beethoven



Musical notation for "Ode To Joy" by Ludwig Van Beethoven. The piece is in G major and 4/4 time. The notation consists of two staves. The first staff begins with a treble clef, a key signature of two flats (B-flat and E-flat), and a 4/4 time signature. The melody starts with a quarter note G4, followed by quarter notes A4, B4, C5, D5, E5, F5, G5, A5, B5, C6, D6, E6, F6, G6, A6, B6, C7, D7, E7, F7, G7, A7, B7, C8, D8, E8, F8, G8, A8, B8, C9, D9, E9, F9, G9, A9, B9, C10, D10, E10, F10, G10, A10, B10, C11, D11, E11, F11, G11, A11, B11, C12, D12, E12, F12, G12, A12, B12, C13, D13, E13, F13, G13, A13, B13, C14, D14, E14, F14, G14, A14, B14, C15, D15, E15, F15, G15, A15, B15, C16, D16, E16, F16, G16, A16, B16, C17, D17, E17, F17, G17, A17, B17, C18, D18, E18, F18, G18, A18, B18, C19, D19, E19, F19, G19, A19, B19, C20, D20, E20, F20, G20, A20, B20, C21, D21, E21, F21, G21, A21, B21, C22, D22, E22, F22, G22, A22, B22, C23, D23, E23, F23, G23, A23, B23, C24, D24, E24, F24, G24, A24, B24, C25, D25, E25, F25, G25, A25, B25, C26, D26, E26, F26, G26, A26, B26, C27, D27, E27, F27, G27, A27, B27, C28, D28, E28, F28, G28, A28, B28, C29, D29, E29, F29, G29, A29, B29, C30, D30, E30, F30, G30, A30, B30, C31, D31, E31, F31, G31, A31, B31, C32, D32, E32, F32, G32, A32, B32, C33, D33, E33, F33, G33, A33, B33, C34, D34, E34, F34, G34, A34, B34, C35, D35, E35, F35, G35, A35, B35, C36, D36, E36, F36, G36, A36, B36, C37, D37, E37, F37, G37, A37, B37, C38, D38, E38, F38, G38, A38, B38, C39, D39, E39, F39, G39, A39, B39, C40, D40, E40, F40, G40, A40, B40, C41, D41, E41, F41, G41, A41, B41, C42, D42, E42, F42, G42, A42, B42, C43, D43, E43, F43, G43, A43, B43, C44, D44, E44, F44, G44, A44, B44, C45, D45, E45, F45, G45, A45, B45, C46, D46, E46, F46, G46, A46, B46, C47, D47, E47, F47, G47, A47, B47, C48, D48, E48, F48, G48, A48, B48, C49, D49, E49, F49, G49, A49, B49, C50, D50, E50, F50, G50, A50, B50, C51, D51, E51, F51, G51, A51, B51, C52, D52, E52, F52, G52, A52, B52, C53, D53, E53, F53, G53, A53, B53, C54, D54, E54, F54, G54, A54, B54, C55, D55, E55, F55, G55, A55, B55, C56, D56, E56, F56, G56, A56, B56, C57, D57, E57, F57, G57, A57, B57, C58, D58, E58, F58, G58, A58, B58, C59, D59, E59, F59, G59, A59, B59, C60, D60, E60, F60, G60, A60, B60, C61, D61, E61, F61, G61, A61, B61, C62, D62, E62, F62, G62, A62, B62, C63, D63, E63, F63, G63, A63, B63, C64, D64, E64, F64, G64, A64, B64, C65, D65, E65, F65, G65, A65, B65, C66, D66, E66, F66, G66, A66, B66, C67, D67, E67, F67, G67, A67, B67, C68, D68, E68, F68, G68, A68, B68, C69, D69, E69, F69, G69, A69, B69, C70, D70, E70, F70, G70, A70, B70, C71, D71, E71, F71, G71, A71, B71, C72, D72, E72, F72, G72, A72, B72, C73, D73, E73, F73, G73, A73, B73, C74, D74, E74, F74, G74, A74, B74, C75, D75, E75, F75, G75, A75, B75, C76, D76, E76, F76, G76, A76, B76, C77, D77, E77, F77, G77, A77, B77, C78, D78, E78, F78, G78, A78, B78, C79, D79, E79, F79, G79, A79, B79, C80, D80, E80, F80, G80, A80, B80, C81, D81, E81, F81, G81, A81, B81, C82, D82, E82, F82, G82, A82, B82, C83, D83, E83, F83, G83, A83, B83, C84, D84, E84, F84, G84, A84, B84, C85, D85, E85, F85, G85, A85, B85, C86, D86, E86, F86, G86, A86, B86, C87, D87, E87, F87, G87, A87, B87, C88, D88, E88, F88, G88, A88, B88, C89, D89, E89, F89, G89, A89, B89, C90, D90, E90, F90, G90, A90, B90, C91, D91, E91, F91, G91, A91, B91, C92, D92, E92, F92, G92, A92, B92, C93, D93, E93, F93, G93, A93, B93, C94, D94, E94, F94, G94, A94, B94, C95, D95, E95, F95, G95, A95, B95, C96, D96, E96, F96, G96, A96, B96, C97, D97, E97, F97, G97, A97, B97, C98, D98, E98, F98, G98, A98, B98, C99, D99, E99, F99, G99, A99, B99, C100, D100, E100, F100, G100, A100, B100, C101, D101, E101, F101, G101, A101, B101, C102, D102, E102, F102, G102, A102, B102, C103, D103, E103, F103, G103, A103, B103, C104, D104, E104, F104, G104, A104, B104, C105, D105, E105, F105, G105, A105, B105, C106, D106, E106, F106, G106, A106, B106, C107, D107, E107, F107, G107, A107, B107, C108, D108, E108, F108, G108, A108, B108, C109, D109, E109, F109, G109, A109, B109, C110, D110, E110, F110, G110, A110, B110, C111, D111, E111, F111, G111, A111, B111, C112, D112, E112, F112, G112, A112, B112, C113, D113, E113, F113, G113, A113, B113, C114, D114, E114, F114, G114, A114, B114, C115, D115, E115, F115, G115, A115, B115, C116, D116, E116, F116, G116, A116, B116, C117, D117, E117, F117, G117, A117, B117, C118, D118, E118, F118, G118, A118, B118, C119, D119, E119, F119, G119, A119, B119, C120, D120, E120, F120, G120, A120, B120, C121, D121, E121, F121, G121, A121, B121, C122, D122, E122, F122, G122, A122, B122, C123, D123, E123, F123, G123, A123, B123, C124, D124, E124, F124, G124, A124, B124, C125, D125, E125, F125, G125, A125, B125, C126, D126, E126, F126, G126, A126, B126, C127, D127, E127, F127, G127, A127, B127, C128, D128, E128, F128, G128, A128, B128, C129, D129, E129, F129, G129, A129, B129, C130, D130, E130, F130, G130, A130, B130, C131, D131, E131, F131, G131, A131, B131, C132, D132, E132, F132, G132, A132, B132, C133, D133, E133, F133, G133, A133, B133, C134, D134, E134, F134, G134, A134, B134, C135, D135, E135, F135, G135, A135, B135, C136, D136, E136, F136, G136, A136, B136, C137, D137, E137, F137, G137, A137, B137, C138, D138, E138, F138, G138, A138, B138, C139, D139, E139, F139, G139, A139, B139, C140, D140, E140, F140, G140, A140, B140, C141, D141, E141, F141, G141, A141, B141, C142, D142, E142, F142, G142, A142, B142, C143, D143, E143, F143, G143, A143, B143, C144, D144, E144, F144, G144, A144, B144, C145, D145, E145, F145, G145, A145, B145, C146, D146, E146, F146, G146, A146, B146, C147, D147, E147, F147, G147, A147, B147, C148, D148, E148, F148, G148, A148, B148, C149, D149, E149, F149, G149, A149, B149, C150, D150, E150, F150, G150, A150, B150, C151, D151, E151, F151, G151, A151, B151, C152, D152, E152, F152, G152, A152, B152, C153, D153, E153, F153, G153, A153, B153, C154, D154, E154, F154, G154, A154, B154, C155, D155, E155, F155, G155, A155, B155, C156, D156, E156, F156, G156, A156, B156, C157, D157, E157, F157, G157, A157, B157, C158, D158, E158, F158, G158, A158, B158, C159, D159, E159, F159, G159, A159, B159, C160, D160, E160, F160, G160, A160, B160, C161, D161, E161, F161, G161, A161, B161, C162, D162, E162, F162, G162, A162, B162, C163, D163, E163, F163, G163, A163, B163, C164, D164, E164, F164, G164, A164, B164, C165, D165, E165, F165, G165, A165, B165, C166, D166, E166, F166, G166, A166, B166, C167, D167, E167, F167, G167, A167, B167, C168, D168, E168, F168, G168, A168, B168, C169, D169, E169, F169, G169, A169, B169, C170, D170, E170, F170, G170, A170, B170, C171, D171, E171, F171, G171, A171, B171, C172, D172, E172, F172, G172, A172, B172, C173, D173, E173, F173, G173, A173, B173, C174, D174, E174, F174, G174, A174, B174, C175, D175, E175, F175, G175, A175, B175, C176, D176, E176, F176, G176, A176, B176, C177, D177, E177, F177, G177, A177, B177, C178, D178, E178, F178, G178, A178, B178, C179, D179, E179, F179, G179, A179, B179, C180, D180, E180, F180, G180, A180, B180, C181, D181, E181, F181, G181, A181, B181, C182, D182, E182, F182, G182, A182, B182, C183, D183, E183, F183, G183, A183, B183, C184, D184, E184, F184, G184, A184, B184, C185, D185, E185, F185, G185, A185, B185, C186, D186, E186, F186, G186, A186, B186, C187, D187, E187, F187, G187, A187, B187, C188, D188, E188, F188, G188, A188, B188, C189, D189, E189, F189, G189, A189, B189, C190, D190, E190, F190, G190, A190, B190, C191, D191, E191, F191, G191, A191, B191, C192, D192, E192, F192, G192, A192, B192, C193, D193, E193, F193, G193, A193, B193, C194, D194, E194, F194, G194, A194, B194, C195, D195, E195, F195, G195, A195, B195, C196, D196, E196, F196, G196, A196, B196, C197, D197, E197, F197, G197, A197, B197, C198, D198, E198, F198, G198, A198, B198, C199, D199, E199, F199, G199, A199, B199, C200, D200, E200, F200, G200, A200, B200, C201, D201, E201, F201, G201, A201, B201, C202, D202, E202, F202, G202, A202, B202, C203, D203, E203, F203, G203, A203, B203, C204, D204, E204, F204, G204, A204, B204, C205, D205, E205, F205, G205, A205, B205, C206, D206, E206, F206, G206, A206, B206, C207, D207, E207, F207, G207, A207, B207, C208, D208, E208, F208, G208, A208, B208, C209, D209, E209, F209, G209, A209, B209, C210, D210, E210, F210, G210, A210, B210, C211, D211, E211, F211, G211, A211, B211, C212, D212, E212, F212, G212, A212, B212, C213, D213, E213, F213, G213, A213, B213, C214, D214, E214, F214, G214, A214, B214, C215, D215, E215, F215, G215, A215, B215, C216, D216, E216, F216, G216, A216, B216, C217, D217, E217, F217, G217, A217, B217, C218, D218, E218, F218, G218, A218, B218, C219, D219, E219, F219, G219, A219, B219, C220, D220, E220, F220, G220, A220, B220, C221, D221, E221, F221, G221, A221, B221, C222, D222, E222, F222, G222, A222, B222, C223, D223, E223, F223, G223, A223, B223, C224, D224, E224, F224, G224, A224, B224, C225, D225, E225, F225, G225, A225, B225, C226, D226, E226, F226, G226, A226, B226, C227, D227, E227, F227, G227, A227, B227, C228, D228, E228, F228, G228, A228, B228, C229, D229, E229, F229, G229, A229, B229, C230, D230, E230, F230, G230, A230, B230, C231, D231, E231, F231, G231, A231, B231, C232, D232, E232, F232, G232, A232, B232, C233, D233, E233, F233, G233, A233, B233, C234, D234, E234, F234, G234, A234, B234, C235, D235, E235, F235, G235, A235, B235, C236, D236, E236, F236, G236, A236, B236, C237, D237, E237, F237, G237, A237, B237, C238, D238, E238, F238, G238, A238, B238, C239, D239, E239, F239, G239, A239, B239, C240, D240, E240, F240, G240, A240, B240, C241, D241, E241, F241, G241, A241, B241, C242, D242, E242, F242, G242, A242, B242, C243, D243, E243, F243, G243, A243, B243, C244, D244, E244, F244, G244, A244, B244, C245, D245, E245, F245, G245, A245, B245, C246, D246, E246, F246, G246, A246, B246, C247, D247, E247, F247, G247, A247, B247, C248, D248, E248, F248, G248, A248, B248, C249, D249, E249, F249, G249, A249, B249, C250, D250, E250, F250, G250, A250, B250, C251, D251, E251, F251, G251, A251, B251, C252, D252, E252, F252, G252, A252, B252, C253, D253, E253, F253, G253, A253, B253, C254, D254, E254, F254, G254, A254, B254, C255, D255, E255, F255, G255, A255, B255, C256, D256, E256, F256, G256, A256, B256, C257, D257, E257, F257, G257, A257, B257, C258, D258, E258, F258, G258, A258, B258, C259, D259, E259, F259, G259, A259, B259, C260, D260, E260, F260, G260, A260, B260, C261, D261, E261, F261, G261, A261, B261, C262, D262, E262, F262, G262, A262, B262, C263, D263, E263, F263, G263, A263, B263, C264, D264, E264, F264, G264, A264, B264, C265, D265, E265, F265, G265, A265, B265, C266, D266, E266, F266, G266, A266, B266, C267, D267, E267, F267, G267, A267, B267, C268, D268, E268, F268, G268, A268, B268, C269, D269, E269, F269, G269, A269, B269, C270, D270, E270, F270, G270, A270, B270, C271, D271, E271, F271, G271, A271, B271, C272, D272, E272, F272, G272, A272, B272, C273, D273, E273, F273, G273, A273, B273, C274, D274, E274, F274, G274, A274, B274, C275, D275, E275, F275, G275, A275, B275, C276, D276, E276, F276, G276, A276, B276, C277, D277, E277, F277, G277, A277, B277, C278, D278, E278, F278, G278, A278, B278, C279, D279, E279, F279, G279, A279, B279, C280, D280, E280, F280, G280, A280, B280, C281, D281, E281, F281, G281, A281, B281, C282, D282, E282, F282, G282, A282, B282, C283, D283, E283, F283, G283, A283, B283, C284, D284, E284, F284, G284, A284, B284, C285, D285, E285, F285, G285, A285, B285, C286, D286, E286, F286, G286, A286, B286, C287, D287, E287, F287, G287, A287, B287, C288, D288, E288, F288, G288, A288, B288, C289, D289, E289, F289, G289, A289, B289, C290, D290, E290, F290, G290, A290, B290, C291, D291, E291, F291, G291, A291, B291, C292, D292, E292, F292, G292, A292, B292, C293, D293, E293, F293, G293, A293, B293, C294, D294, E294, F294, G294, A294, B294, C295, D295, E295, F295, G295, A295, B295, C296, D296, E296, F296, G296, A296, B296, C297, D297, E297, F297, G297, A297, B297, C298, D298, E298, F298, G298, A298, B298, C299, D299, E299, F299, G299, A299, B299, C300, D300, E300, F300, G300, A300, B300, C301, D301, E301, F301, G301, A301, B301, C302, D302, E302, F302, G302, A302, B302, C303, D303, E303, F303, G303, A303, B303, C304, D304, E304, F304, G304, A304, B304, C305, D305, E305, F305, G305, A305, B305, C306, D306, E306, F306, G306, A306, B306, C307, D307, E307, F307, G307, A307, B307, C308, D308, E308, F308, G308, A308, B308, C309, D309, E309, F309, G309, A309, B309, C310, D310, E310, F310, G310, A310, B310, C311, D311, E311, F311, G311, A311, B311, C312, D312, E312, F312, G312, A312, B312, C313, D313, E313, F313, G313, A313, B313, C314, D314, E314, F314, G314, A314, B314, C315, D315, E315, F315, G315, A315, B315, C316, D316, E316, F316, G316, A316, B316, C317, D317, E317, F317, G317, A317, B317, C318, D318, E318, F318, G318, A318, B318, C319, D319, E319, F319, G319, A319, B319, C320, D320, E320, F320, G320, A320, B320, C321, D321, E321, F321, G321, A321, B321, C322, D322, E322, F322, G322, A322, B322, C323, D323, E323, F323, G323, A323, B323, C324, D324, E324, F324, G324, A324, B324, C325, D325, E325, F325, G325, A325, B325, C326, D326, E326, F326, G326, A326, B326, C327, D327, E327, F327, G327, A327, B327, C328, D328, E328, F328, G328, A328, B328, C329, D329, E329, F329, G329, A329, B329, C330, D330, E330, F330, G330, A330, B330, C331, D331, E331, F331, G331, A331, B331, C332, D332, E332, F332, G332, A332, B332, C333, D333, E333, F333, G333, A333, B333, C334, D334, E334, F334, G334, A334, B334, C335, D335, E335, F335, G335, A335, B335, C336, D336, E336, F336, G336, A336, B336, C337, D337, E337, F337, G337, A337, B337, C338, D338, E338, F338, G338, A338, B338, C339, D339, E339, F339, G339, A339, B339, C340, D340, E340, F340, G340, A340, B340, C341, D341, E341, F341, G341, A341, B341, C342, D342, E342, F342, G342, A342, B342, C343, D343, E343, F343, G343, A343, B343, C344, D344, E344, F344, G344, A344, B344, C345, D345, E345, F345, G345, A345, B345, C346, D346, E346, F346, G346, A346, B346, C347, D347, E347, F347, G347, A347, B347, C348, D348, E348, F348, G348, A348, B348, C349, D349, E349, F349, G349, A349, B349, C350, D350, E350, F350, G350, A350, B350, C351, D351, E351, F351, G351, A351, B351, C352, D352, E352, F352, G352, A352, B352, C353, D353, E353, F353, G353, A353, B353, C354, D354, E354, F354, G354, A354, B354, C355, D355, E355, F355, G355, A355, B355, C356, D356, E356, F356, G356, A356, B356, C357, D357, E357, F357, G357, A357, B357, C358, D358, E358, F358, G358, A358, B358, C359, D359, E359, F359, G359, A359, B359, C360, D360, E360, F360, G360, A360, B360, C361, D361, E361, F361, G361, A361, B361, C362, D362, E362, F362, G362, A362, B362, C363, D363, E363, F363, G363, A363, B363, C364, D364, E364, F364, G364, A364, B364, C365, D365, E365, F365, G365, A365, B365, C366, D366, E366, F366, G366, A366, B366, C367, D367, E367, F367, G367, A367, B367, C368, D368, E368, F368, G368, A368, B368, C369, D369, E369, F369, G369, A369, B369, C370, D370, E370, F370, G370, A370, B370, C371, D371, E371, F371, G371, A371, B371, C372, D372, E372, F372, G372, A372, B3

12.06 "Dotted-Quarter Blues" (swing) - Dickson

F#

13.01 New note!

C

13.02 Going up

13.03 Five-note scale

13.04 "Jingle Bells"

13.05 "This Old Man"

Two staves of musical notation in G major (one sharp) and 4/4 time. The first staff contains a sequence of quarter notes: G4, A4, B4, C5, B4, A4, G4, F4, E4, D4, C4, B3, A3, G3. The second staff contains a sequence of quarter notes: G4, A4, B4, C5, B4, A4, G4, F4, E4, D4, C4, B3, A3, G3, followed by a double bar line.

14.01 Clarinet high C

One staff of musical notation in G major (one sharp) and 4/4 time. The exercise consists of a sequence of half notes: C5, B4, A4, G4, F4, E4, D4, C4, B3, A3, G3, followed by a double bar line.

14.02 Clarinet high D

One staff of musical notation in G major (one sharp) and 4/4 time. The exercise consists of a sequence of half notes: D5, C5, B4, A4, G4, F4, E4, D4, C4, B3, A3, G3, followed by a double bar line.

14.03 Clarinet pinky power

One staff of musical notation in G major (one sharp) and 4/4 time. The exercise consists of a sequence of half notes: E4, F4, G4, A4, B4, C5, B4, A4, G4, F4, E4, followed by a double bar line.

14.04 New note!

One staff of musical notation in G major (one sharp) and 4/4 time. The exercise consists of a single half note: D5, followed by a double bar line.

D

14.05 Going up

One staff of musical notation in G major (one sharp) and 4/4 time. The exercise consists of a sequence of quarter notes: G4, A4, B4, C5, B4, A4, G4, F4, E4, D4, C4, B3, A3, G3, followed by a double bar line.







15.04 "This Old Man"

Two staves of musical notation for the piece "This Old Man". The first staff contains the first four measures, and the second staff contains the next four measures. The music is in a 2/4 time signature with a key signature of one flat (Bb). The melody consists of eighth and quarter notes.

15.05 "Amazing Grace"

Two staves of musical notation for the piece "Amazing Grace". The first staff contains the first four measures, and the second staff contains the next four measures. The music is in a 3/4 time signature with a key signature of one flat (Bb). The melody features a mix of quarter and eighth notes, with some notes beamed together.

15.06 New note!

A single staff of musical notation for the piece "New note!". It shows a single note on the second line of the staff (E4) followed by two measures of rests. The key signature is one flat (Bb).

E

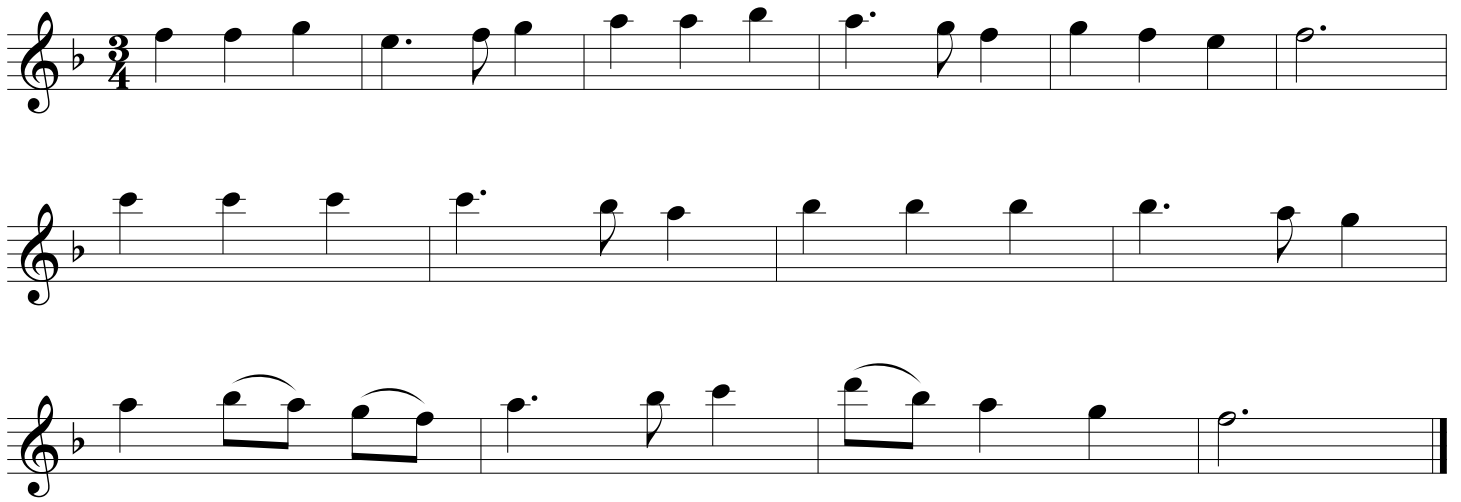
15.07 "Yankee Doodle"

A single staff of musical notation for the piece "Yankee Doodle". The music is in a 4/4 time signature with a key signature of one flat (Bb). The melody is a simple eighth-note pattern.

15.08 "Head Shoulders Knees And Toes"

Two staves of musical notation for the piece "Head Shoulders Knees And Toes". The first staff contains the first four measures, and the second staff contains the next four measures. The music is in a 4/4 time signature with a key signature of one flat (Bb). The melody is a simple eighth-note pattern.

15.09 "My Country 'Tis Of Thee"



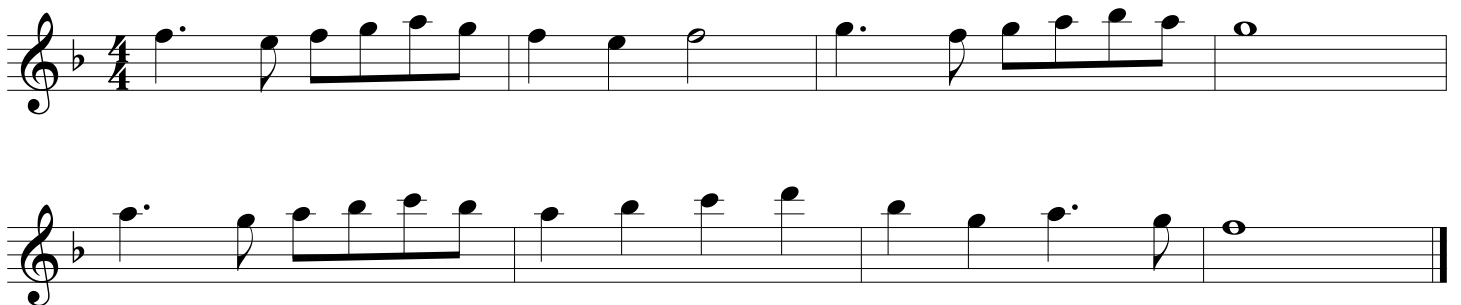
Musical score for "My Country 'Tis Of Thee" in 3/4 time, key of B-flat major. The score consists of three staves of music. The first staff begins with a treble clef, a key signature of one flat (B-flat), and a 3/4 time signature. The melody is written in a simple, lyrical style with quarter and half notes. The second and third staves continue the melody, with the third staff ending with a double bar line.

15.10 "America The Beautiful"

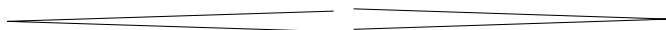


Musical score for "America The Beautiful" in 4/4 time, key of B-flat major. The score consists of four staves of music. The first staff begins with a treble clef, a key signature of two flats (B-flat and E-flat), and a 4/4 time signature. The melody is written in a simple, lyrical style with quarter and half notes. The second and third staves continue the melody, with the third staff featuring a fermata over a note and a letter 'B' above it. The fourth staff continues the melody and ends with a double bar line.

15.11 Etude



Musical score for "Etude" in 4/4 time, key of B-flat major. The score consists of two staves of music. The first staff begins with a treble clef, a key signature of one flat (B-flat), and a 4/4 time signature. The melody is written in a simple, lyrical style with quarter and half notes. The second staff continues the melody and ends with a double bar line.



15.12 "Auld Lang Syne"

Musical notation for "Auld Lang Syne" in G major, 4/4 time. The piece consists of two staves of music. The first staff begins with a whole rest followed by a quarter rest, then a series of eighth and quarter notes. The second staff continues the melody with similar rhythmic patterns, ending with a whole note and a double bar line.

15.13 "Eine Kleine Nachtmusik" melody, W.A. Mozart

Musical notation for the melody of "Eine Kleine Nachtmusik" in G major, 4/4 time. The piece consists of five staves of music. The first staff starts with a forte (*f*) dynamic and features a series of eighth and quarter notes. The second staff continues with eighth notes and quarter notes. The third staff includes a crescendo hairpin and a piano (*p*) dynamic marking. The fourth and fifth staves conclude the melody with various note values and rests, ending with a double bar line.

15.14 "Anchors Aweigh" (U.S. Navy Song)

Musical notation for "Anchors Aweigh" in G major, 4/4 time. The piece consists of three staves of music. The first staff begins with a whole note, followed by quarter and eighth notes. The second staff continues with quarter notes and a long melisma. The third staff concludes the melody with quarter notes and a final whole note, ending with a double bar line.

Hold every note out all the way until the next note starts.  
Tap your foot while you play.

16.01 Etude: Phrasing

*mp*

16.02 Etude: Phrasing

Hold every note out all the way until the next note starts.  
Tap your foot while you play.

Slowly

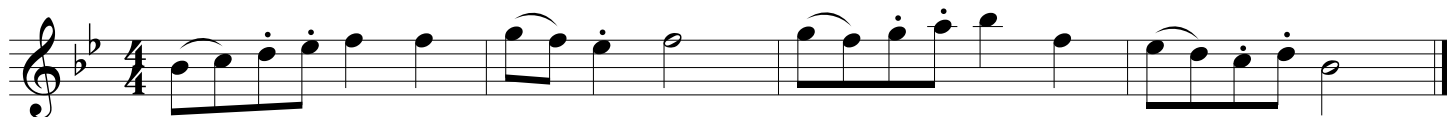
*mp*

16.03 Etude: Phrasing and Articulation

Hold every note out all the way until the next note starts.  
Tap your foot while you play.

*f*

16.04 Etude: Articulation



16.05 Etude: Ostinato

*Count the beats in your mind so you do not lose your place.*

