

MR. DICKSON'S METHOD FOR BAND

Book Two

French Horn

www.JustinDickson.com/Band

revised January 21, 2019

"Strategies That Work When Learning New Music"

Read before you play

- Before you play, read through the music and say the letter names of the notes out loud.
- Before you play, tizzle the rhythms. Tap your foot while you do it, to keep a steady beat.

Set up for a good first note

- Finger the first note before you start to play the song, before you breathe.
- Breathe on the beat before you start. Breathe together to play together.

While you are playing

- Tap your foot gently with the beat while you play, and count your rests.
- Look ahead while you play, so you are ready for the next thing you have to play.

Use technology to help you learn

- When practicing at home, use a tuner app like Bandmate Chromatic Tuner (free version) to check if you are playing the right notes.
- When practicing at home, use a metronome app like Tempo by Frozen Ape (free version) to make sure you are keeping a steady beat.

When you get stuck on a hard part

- First of all, it's not hard, it's just new. Keep trying, you'll get better.
- Find the notes that are difficult for you, and just play them over and over. Break it down to just 2 or 3 notes at a time, and play them as much as you can. Don't try to play the whole song yet if you really just need to work on a few tricky notes in the middle.
- Slowwwwwww downnnnnnnnn. Play it really, really, really slowly. Speed will come later.
- Say the letter names of the notes out loud. Don't just think it, you have to say it out loud or it does not help.
- Tizzle the rhythms, or say the rhythms using a "dah" syllable.
- It's not about trying hard enough, it's about trying often enough. Don't try it 2 or 3 times and then give up. Your body needs more reps to learn new things. Try it 10-15 times, then move on to something else and come back to it later.
- Ask for help! Your teacher gets paid the big bucks to help you. Use them!

10.01 "Back To School Blues"

Three staves of musical notation in 4/4 time, key of B-flat major. The melody consists of quarter and eighth notes, with some beamed eighth notes and a final double bar line with repeat dots.

10.02 New note for clarinets only

A single staff of musical notation in 4/4 time, key of B-flat major, showing a single quarter note on the first line of the staff.

10.03 Clarinet pinky power!

A single staff of musical notation in 4/4 time, key of B-flat major, showing a continuous eighth-note scale across the staff.

10.04 Five note scale

A single staff of musical notation in 4/4 time, key of B-flat major, showing a five-note scale across the staff.

10.05 "Jingle Bells"

Two staves of musical notation in 4/4 time, key of B-flat major, showing the melody for 'Jingle Bells'.

10.06 "Four Note Blues" -Dickson

Musical notation for "Four Note Blues" - Dickson. The piece is in 4/4 time and B-flat major. It consists of three staves of music. The first two staves contain a melody of eighth and quarter notes. The third staff contains a bass line with rests in the first two measures, followed by eighth and quarter notes.

10.07 "Happy Birthday"

Musical notation for "Happy Birthday". The piece is in 3/4 time and B-flat major. It consists of two staves of music. The first staff contains a melody of quarter and eighth notes. The second staff contains a bass line of quarter notes, with a fermata over the second measure.

play top or bottom notes, which ever is easier

10.08 "Banana Boat Song"

Musical notation for "Banana Boat Song" (first staff). The piece is in 4/4 time and B-flat major. It consists of a single staff of music. The melody is composed of quarter and eighth notes. The word *Fine* is written above the end of the staff.

Musical notation for "Banana Boat Song" (second staff). The piece is in 4/4 time and B-flat major. It consists of a single staff of music. The melody is composed of quarter and eighth notes. The word *D.C. al Fine* is written above the end of the staff.

11.01 Dynamics

Musical notation for dynamics exercise 11.01. It consists of a single staff in 4/4 time with a key signature of two flats. The staff contains four whole notes, each in a separate measure. The notes are on the same pitch (middle C). The dynamic markings below the notes are *p*, *mp*, *mf*, and *f*, showing a steady increase in volume from left to right.

11.02 Crescendo

Musical notation for crescendo exercise 11.02. It consists of a single staff in 4/4 time with a key signature of two flats. The staff contains four whole notes, each in a separate measure. The notes are on the same pitch (middle C). The dynamic markings below the notes are *p*, *mp*, *mf*, and *f*. Between each pair of notes, there is a crescendo hairpin (two lines meeting at a point) indicating a gradual increase in volume.

11.03 Decrescendo

Musical notation for decrescendo exercise 11.03. It consists of a single staff in 4/4 time with a key signature of two flats. The staff contains four whole notes, each in a separate measure. The notes are on the same pitch (middle C). The dynamic markings below the notes are *f*, *mf*, *mp*, and *p*. Between each pair of notes, there is a decrescendo hairpin (two lines meeting at a point) indicating a gradual decrease in volume.

11.04 Etude

Musical notation for etude exercise 11.04. It consists of a single staff in 4/4 time with a key signature of two flats. The staff contains a sequence of notes: a quarter note, followed by an eighth note pair, a quarter note, and a half note in the first measure; a quarter note, followed by an eighth note pair, a quarter note, and a half note in the second measure; a quarter note, followed by an eighth note pair, a quarter note, and a half note in the third measure; and a quarter note, followed by an eighth note pair, a quarter note, and a half note in the fourth measure. The dynamic markings below the notes are *mp*, *f*, and *mp*. There are crescendo and decrescendo hairpins indicating a gradual increase in volume from *mp* to *f* and then a gradual decrease back to *mp*.

12.01 Dotted-quarter notes

Musical notation for dotted-quarter notes exercise 12.01. It consists of a single staff in 4/4 time with a key signature of two flats. The staff contains four measures. The first measure has a dotted quarter note followed by an eighth note. The second measure has a dotted quarter note followed by an eighth note. The third measure has a dotted quarter note followed by an eighth note. The fourth measure has a dotted quarter note followed by an eighth note.

12.02 Etude

Musical notation for etude exercise 12.02. It consists of a single staff in 4/4 time with a key signature of two flats. The staff contains a sequence of notes: a quarter note, followed by an eighth note pair, a quarter note, and a half note in the first measure; a quarter note, followed by an eighth note pair, a quarter note, and a half note in the second measure; a quarter note, followed by an eighth note pair, a quarter note, and a half note in the third measure; and a quarter note, followed by an eighth note pair, a quarter note, and a half note in the fourth measure.

12.03 "Ode To Joy" by Ludwig Van Beethoven



Musical notation for the first system of "Ode To Joy" by Ludwig Van Beethoven. It consists of two staves in 4/4 time, key of B-flat major. The first staff contains the first 16 measures, ending with a fermata. The second staff contains the next 16 measures, starting with a double bar line. The word "Fine" is written below the first staff, and "D.S. al Fine" is written below the second staff.

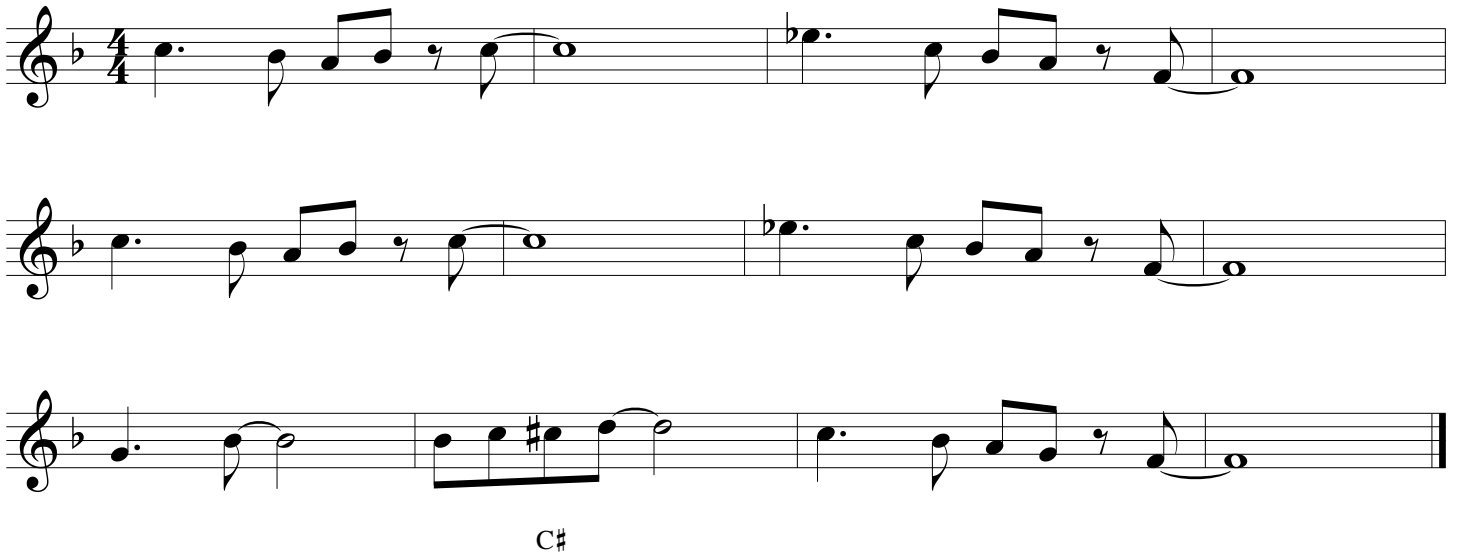
12.04 "Deck The Halls"

Musical notation for the first system of "Deck The Halls". It consists of a single staff in 4/4 time, key of B-flat major. The melody starts with a quarter rest, followed by a quarter note G4, and continues with eighth and quarter notes. The piece ends with a fermata. The letter "A" is written below the final note.

12.05 "U.S. Marine Corps Hymn"

Musical notation for the first system of "U.S. Marine Corps Hymn". It consists of four staves in 4/4 time, key of B-flat major. The first staff begins with a quarter rest, followed by a quarter note G4. The second and fourth staves feature a bass line with a dotted quarter note G3 and an eighth note F3. The melody continues across all staves with quarter and eighth notes.

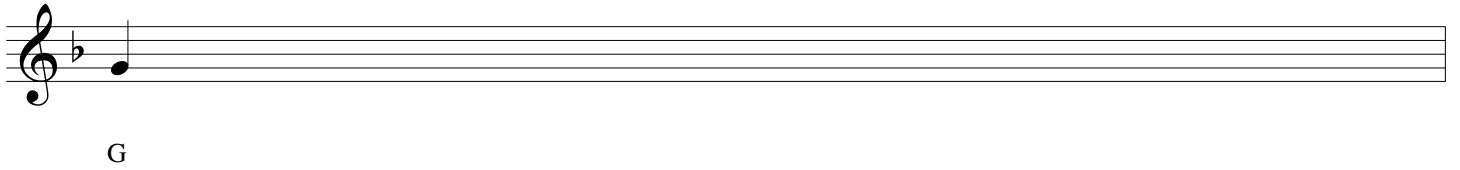
12.06 "Dotted-Quarter Blues" (swing) - Dickson



Musical notation for "Dotted-Quarter Blues" (swing) - Dickson. The piece is in 4/4 time and B-flat major. It consists of three staves of music. The first two staves show a melodic line with a dotted quarter note followed by an eighth note, and a quarter note followed by an eighth note. The third staff shows a similar pattern with a sharp sign above the notes, indicating a chromatic alteration.

C#

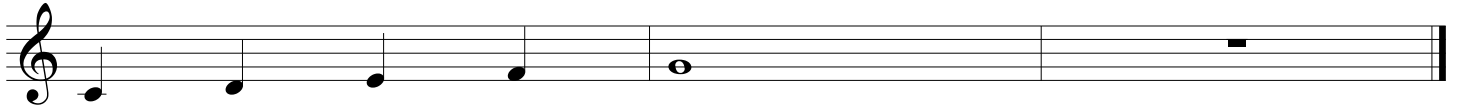
13.01 New note!



Musical notation for "New note!". It shows a single note on a treble clef staff, which is a G note (G4).

G

13.02 Going up



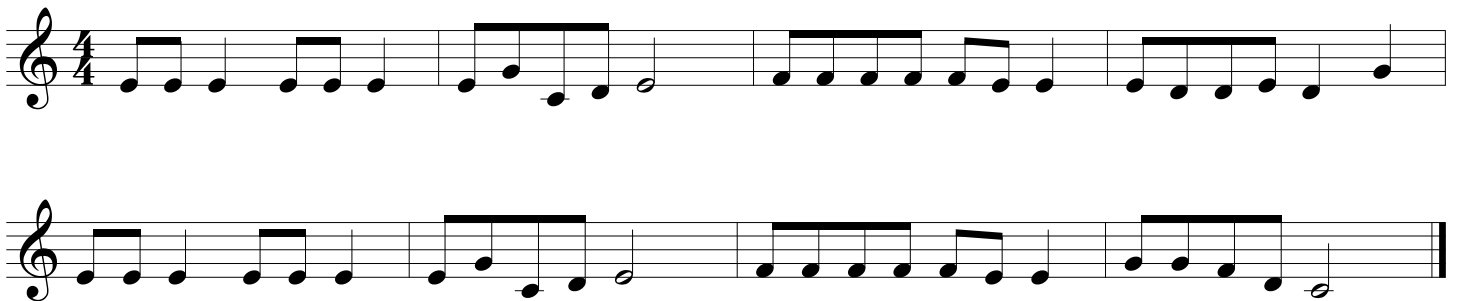
Musical notation for "Going up". It shows a sequence of notes on a treble clef staff, starting from a G note and moving up stepwise to a D note, followed by a whole rest.

13.03 Five-note scale



Musical notation for "Five-note scale". It shows a sequence of notes on a treble clef staff, starting from a G note and moving up stepwise to a D note, followed by a whole rest.

13.04 "Jingle Bells"



Musical notation for "Jingle Bells". It shows two staves of music in 4/4 time, featuring a rhythmic pattern of eighth and sixteenth notes.

13.05 "This Old Man"

Two staves of musical notation for the piece "This Old Man". The first staff contains the first eight measures, and the second staff contains the remaining eight measures. The key signature has two flats (B-flat and E-flat), and the time signature is 4/4. The melody consists of quarter and eighth notes.

14.01 Clarinet high C

A single staff of musical notation for the exercise "Clarinet high C". The key signature has two flats (B-flat and E-flat), and the time signature is 4/4. The exercise consists of ten measures, each containing a single half note on the C line of the staff, with a small square above the note indicating a finger lift.

14.02 Clarinet high D

A single staff of musical notation for the exercise "Clarinet high D". The key signature has two flats (B-flat and E-flat), and the time signature is 4/4. The exercise consists of ten measures, each containing a single half note on the D line of the staff, with a small square above the note indicating a finger lift.

14.03 Clarinet pinky power

A single staff of musical notation for the exercise "Clarinet pinky power". The key signature has two flats (B-flat and E-flat), and the time signature is 4/4. The exercise consists of six measures, each containing a single half note on the G line of the staff.

14.04 New note!

A single staff of musical notation for the exercise "New note!". The key signature has two flats (B-flat and E-flat), and the time signature is 4/4. The exercise consists of a single measure containing a single half note on the G line of the staff.

A

14.05 Going up

A single staff of musical notation for the exercise "Going up". The key signature has two flats (B-flat and E-flat), and the time signature is 4/4. The exercise consists of ten measures, each containing a single half note on the G line of the staff, with a small square above the note indicating a finger lift.

14.06 "Mary Had A Little Lamb"

Musical notation for the first exercise, 'Mary Had A Little Lamb', in 4/4 time. The melody consists of eighth and quarter notes across a single staff.

14.07 One more new note for clarinets

Musical notation for the second exercise, 'One more new note for clarinets', showing a single note on a staff with the letter 'E' below it.

14.08 Other pinky power!

Musical notation for the third exercise, 'Other pinky power!', showing a sequence of quarter notes on a staff.

14.09 Four-note scale

Musical notation for the fourth exercise, 'Four-note scale', showing a four-note scale with notes E, F, G, A, G, F, E labeled below.

14.10 Crossing the break

Musical notation for the fifth exercise, 'Crossing the break', showing a sequence of notes crossing the staff break.

14.11 Crossing the break

Musical notation for the sixth exercise, 'Crossing the break', showing a sequence of notes crossing the staff break.

14.12 Take it slowly

Musical notation for the seventh exercise, 'Take it slowly', showing a sequence of notes with a 'Take it slowly' instruction.

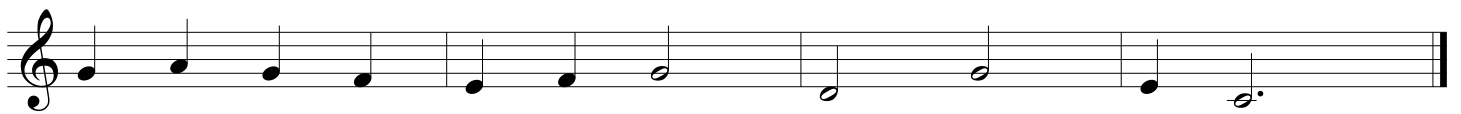
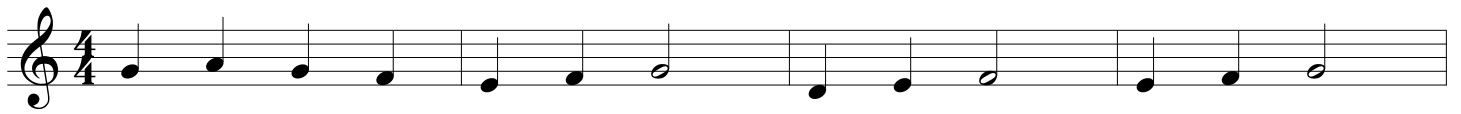
14.13 You can do it



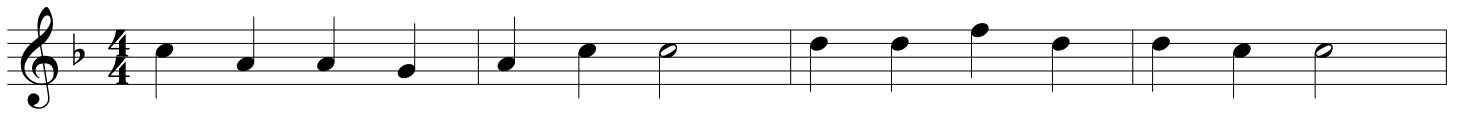
15.01 "Twinkle Twinkle"



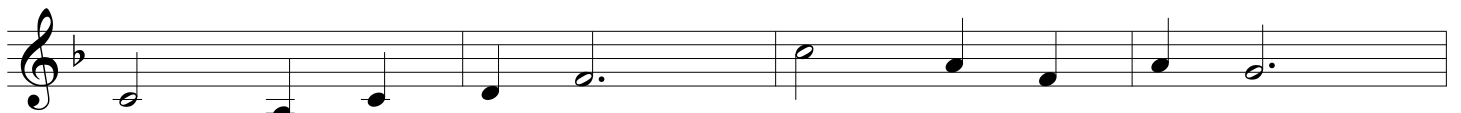
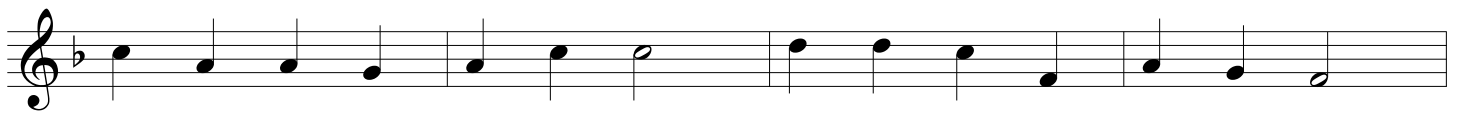
15.02 "London Bridge"



15.03 "Jesus Loves Me"



F



15.04 "This Old Man"

Two staves of musical notation for the song "This Old Man". The first staff contains the first four measures, and the second staff contains the next four measures. The melody is written in a simple, rhythmic style with quarter and eighth notes.

15.05 "Amazing Grace"

Two staves of musical notation for the hymn "Amazing Grace". The first staff contains the first four measures, and the second staff contains the next four measures. The melody is written in a simple, rhythmic style with quarter and eighth notes.

15.06 New note!

A single staff of musical notation for the exercise "New note!". It begins with a treble clef and a key signature of one flat (Bb). The first measure contains a quarter note on the B line (Bb). The second and third measures contain rests. The letter "B" is written below the first measure.

15.07 "Yankee Doodle"

A single staff of musical notation for the song "Yankee Doodle". The melody is written in a simple, rhythmic style with eighth and quarter notes in a 4/4 time signature.

15.08 "Head Shoulders Knees And Toes"

Two staves of musical notation for the song "Head Shoulders Knees And Toes". The first staff contains the first four measures, and the second staff contains the next four measures. The melody is written in a simple, rhythmic style with quarter and eighth notes in a 4/4 time signature.

15.09 "My Country 'Tis Of Thee"

Musical score for "My Country 'Tis Of Thee" in 3/4 time. The score consists of three staves of music. The first staff begins with a treble clef and a 3/4 time signature. The melody is written in a single line. The second and third staves continue the melody. The piece concludes with a double bar line.

15.10 "America The Beautiful"

Musical score for "America The Beautiful" in 4/4 time. The score consists of four staves of music. The first staff begins with a treble clef and a 4/4 time signature. The melody is written in a single line. The second and third staves continue the melody. The fourth staff concludes the piece with a double bar line. A sharp sign (#) is placed below the staff in the second measure of the second staff, with the label "F#" below it.

15.11 Etude

Musical score for "Etude" in 4/4 time. The score consists of two staves of music. The first staff begins with a treble clef and a 4/4 time signature. The melody is written in a single line. The second staff continues the melody and concludes with a double bar line.



15.12 "Auld Lang Syne"

Two staves of musical notation for "Auld Lang Syne" in 4/4 time. The first staff begins with a whole rest followed by a quarter note G4, then a dotted quarter note A4, and a quarter note B4. The second staff continues with a quarter note C5, a dotted quarter note B4, a quarter note A4, a dotted quarter note G4, a quarter note F4, a dotted quarter note E4, a quarter note D4, and a whole note C4.

15.13 "Eine Kleine Nachtmusik" melody, W.A. Mozart

Four staves of musical notation for the melody of "Eine Kleine Nachtmusik" in 4/4 time. The first staff starts with a forte (*f*) dynamic and contains a dotted quarter note G4, a quarter note A4, a dotted quarter note B4, and a quarter note C5. The second staff continues with a quarter note B4, a dotted quarter note A4, a quarter note G4, a dotted quarter note F4, a quarter note E4, a dotted quarter note D4, a quarter note C4, and a whole note B3. The third staff features a piano (*p*) dynamic and includes a crescendo hairpin, a dotted quarter note G3, a quarter note A3, a dotted quarter note B3, and a quarter note C4. The fourth staff concludes with a quarter note B3, a dotted quarter note A3, a quarter note G3, a dotted quarter note F3, a quarter note E3, a dotted quarter note D3, a quarter note C3, and a whole note B2.

15.14 "Anchors Aweigh" (U.S. Navy Song)

Three staves of musical notation for "Anchors Aweigh" in 4/4 time with a key signature of one flat. The first staff begins with a whole note G3, a quarter note A3, a dotted quarter note B3, and a quarter note C4. The second staff continues with a quarter note B3, a dotted quarter note A3, a quarter note G3, a dotted quarter note F3, a quarter note E3, a dotted quarter note D3, a quarter note C3, and a whole note B2. The third staff features a half note G3, a quarter note A3, a dotted quarter note B3, a quarter note C4, a dotted quarter note B3, a quarter note A3, a dotted quarter note G3, a quarter note F3, a dotted quarter note E3, a quarter note D3, a dotted quarter note C3, a quarter note B2, and a whole note A2.

15.15 Chapter Fifteen Blues (swing)

Musical notation for 15.15 Chapter Fifteen Blues (swing). The piece is in 4/4 time with a key signature of one flat (B-flat). It consists of three staves of music. The first two staves are identical and feature a melodic line with eighth and quarter notes, including a triplet of eighth notes. The third staff continues the melody with quarter and eighth notes, ending with a fermata over a whole note.

16.01 Etude: Phrasing

Musical notation for 16.01 Etude: Phrasing. The piece is in 4/4 time with a key signature of two flats (B-flat and E-flat). It consists of two staves. The first staff begins with a mezzo-piano (*mp*) dynamic marking. The melody is characterized by long, sweeping phrases connected by slurs, with some notes beamed together. The second staff continues the melodic line with similar phrasing and concludes with a fermata.

16.02 Etude: Phrasing

Musical notation for 16.02 Etude: Phrasing. The piece is in 4/4 time with a key signature of two flats (B-flat and E-flat). It consists of two staves. The first staff begins with the instruction "Slowly" and a mezzo-piano (*mp*) dynamic marking. The melody is composed of several phrases, each starting with a half note followed by a beamed eighth-note triplet. The second staff continues the piece with similar phrasing and concludes with a fermata.

16.03 Etude: Phrasing and Articulation

Two staves of musical notation in treble clef. The first staff begins with a dynamic marking of *f* (forte). The music consists of a sequence of notes: a dotted quarter note, an eighth note, a quarter note, and a half note, followed by a whole note. The second staff continues with a dotted quarter note, an eighth note, a quarter note, and a half note, followed by a whole note. The notation includes various articulation marks such as accents and slurs.

16.04 Etude: Articulation

A single staff of musical notation in treble clef with a key signature of one flat (B-flat). The music features a sequence of notes: a dotted quarter note, an eighth note, a quarter note, and a half note, followed by a whole note. The notation includes various articulation marks such as accents and slurs.

16.05 Etude: Ostinato

Two staves of musical notation in treble clef with a key signature of one flat (B-flat). The music features a sequence of notes: a dotted quarter note, an eighth note, a quarter note, and a half note, followed by a whole note. The notation includes various articulation marks such as accents and slurs.