

MR. DICKSON'S METHOD FOR BAND

Book One

Tuba

www.JustinDickson.com/Band
revised June 23, 2018

--- While You Are Playing ---

Tap your foot with the beat, during all notes and rests.

Count 1-2-3-4-1-2-3-4 in your mind while you play each measure (notes and rests).

Breathe on the beat before you start playing. Breathe together to play together.

Look ahead and get ready for the next measure when you can.

Sit up straight, take a big and relaxed breath every time, don't tense up.

--- Practice ---

Practice your instrument every day. Really. Every day.

Every day you practice, you will get stronger and better;

every day you don't practice, you will get weaker and worse.

It's not about how hard you try; it's about how often you try.

If you want to get good at something, you have to do it over and over and over again slowly.

Practice with a metronome, to help you count and keep a steady beat.

Practice with the Bandmate Chromatic Tuner app to check your notes.

--- Strategies For Learning New Music ---

Slowwwwwww Dooooowwwwwnnnnnnnn.

Slow down the tempo until you can play it without any mistakes, then play it correctly at that tempo 5-10 times before trying to speed up. Slow down again if you make mistakes.

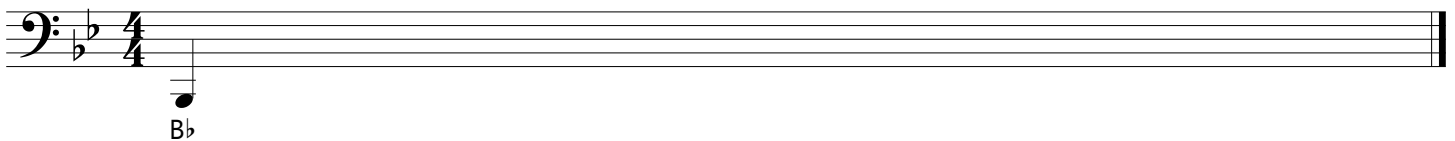
If you make mistakes, stop and fix them! Do not just keep going.

Say the note letter names out loud before you try to play the melody.

Tizzle, count, and/or clap the rhythm before you try to play the melody.

CHAPTER 1: The band will be able to read, count, and play melodies with the pitches concert Bb, C, and D; and rhythms with quarter notes and quarter rests.

1.01 Your first note



Musical notation for 1.01 Your first note. The staff is in bass clef, key signature of two flats (Bb and Eb), and 4/4 time. A single quarter note is written on the second line, labeled Bb.

1.02 Quarter notes and quarter rests

tap your foot with the beat while you play!



Musical notation for 1.02 Quarter notes and quarter rests. The staff is in bass clef, key signature of two flats, and 4/4 time. The first measure contains four quarter notes on the second line, labeled 1, 2, 3, 4. The second measure contains four quarter rests, labeled 1, 2, 3, 4. The third measure contains four quarter notes on the second line, labeled 1, 2, 3, 4. The fourth measure contains four quarter rests, labeled 1, 2, 3, 4.

1.03 Your next note

A single bass clef staff with a key signature of one flat (Bb) and a 4/4 time signature. A single quarter note is written on the second line from the bottom, labeled with the letter 'C' below it.

1.04 Quarter notes and quarter rests

A bass clef staff in 4/4 time. The first measure contains four quarter notes with fingerings 1, 2, 3, and 4. The second measure contains four quarter rests with fingerings 1, 2, 3, and 4. The third measure contains four quarter notes with fingerings 1, 2, 3, and 4. The fourth measure contains four quarter rests with fingerings 1, 2, 3, and 4. The piece ends with a double bar line and repeat dots.

1.05 Think fast

A bass clef staff in 4/4 time. The first measure contains four quarter notes with fingerings 1, 2, 3, and 4. The second measure contains four quarter notes with fingerings 1, 2, 3, and 4. The third measure contains four quarter rests with fingerings 1, 2, 3, and 4. The fourth measure contains four quarter notes with fingerings 1, 2, 3, and 4. The fifth measure contains four quarter notes with fingerings 1, 2, 3, and 4. The sixth measure contains four quarter notes with fingerings 1, 2, 3, and 4. The seventh measure contains four quarter rests with fingerings 1, 2, 3, and 4. The piece ends with a double bar line and repeat dots.

1.06 Another new note

A single bass clef staff with a key signature of one flat (Bb) and a 4/4 time signature. A single quarter note is written on the second space from the bottom, labeled with the letter 'D' below it.

1.07 Quarter notes and quarter rests

look ahead -->

A bass clef staff in 4/4 time. The first measure contains four quarter notes. The second measure contains four quarter rests. The third measure contains four quarter notes. The fourth measure contains four quarter rests. The piece ends with a double bar line and repeat dots.

1.08 Think fast

A bass clef staff in 4/4 time. The first measure contains four quarter notes. The second measure contains four quarter notes. The third measure contains four quarter notes. The fourth measure contains four quarter notes. The fifth measure contains four quarter notes. The sixth measure contains four quarter notes. The seventh measure contains four quarter notes. The eighth measure contains four quarter notes. The piece ends with a double bar line and repeat dots.

1.09 Two at a time

A bass clef staff in 4/4 time. The first measure contains four quarter notes. The second measure contains two quarter notes followed by two quarter rests. The third measure contains two quarter notes followed by two quarter rests. The fourth measure contains four quarter notes. The fifth measure contains two quarter notes followed by two quarter rests. The piece ends with a double bar line and repeat dots.

1.10 "Mary Had A Little Lamb"

*continue down to
the next line >>>>*

Two staves of musical notation in bass clef, 4/4 time signature. The first staff contains 12 measures of music, and the second staff contains 12 more measures. The melody consists of quarter notes and quarter rests.

CHAPTER 2: The band will be able to read, count, and play melodies with the pitches concert Eb and F.

2.01 New note!

A single musical staff in bass clef, 4/4 time signature, showing a single quarter note on the Eb line (the second line from the bottom).

2.02 Counting to one

A single musical staff in bass clef, 4/4 time signature, showing a sequence of quarter notes and quarter rests. The notes are on the Eb line.

2.03 Quarter notes and quarter rests

A single musical staff in bass clef, 4/4 time signature, showing a sequence of quarter notes and quarter rests. The notes are on the Eb line.

2.04 New note!

A single musical staff in bass clef, 4/4 time signature, showing a single quarter note on the F line (the third line from the bottom).

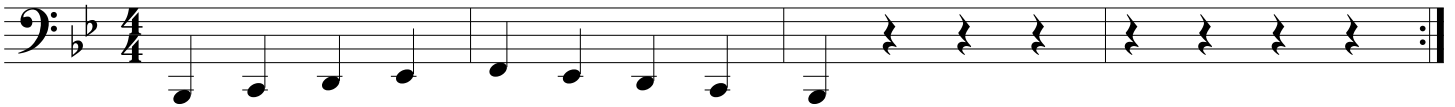
2.05 Quarter notes and quarter rests

A single musical staff in bass clef, 4/4 time signature, showing a sequence of quarter notes and quarter rests. The notes are on the F line.

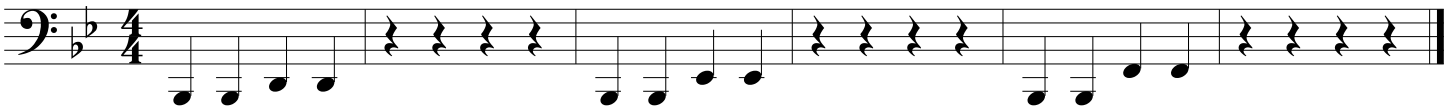
2.06 Keep going



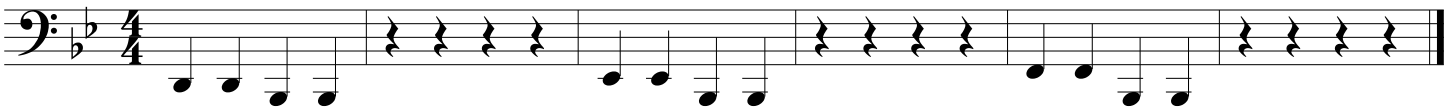
2.07 Five note scale



2.08 Leaping up



2.09 Leaping down

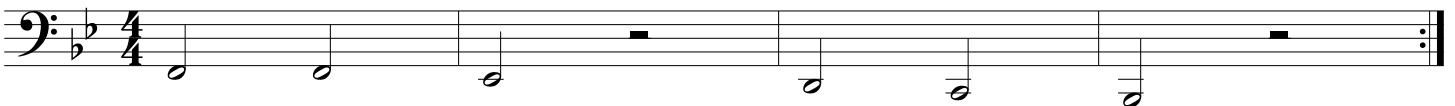


CHAPTER 3: The band will be able to read, count, and play melodies with half notes and half rests.

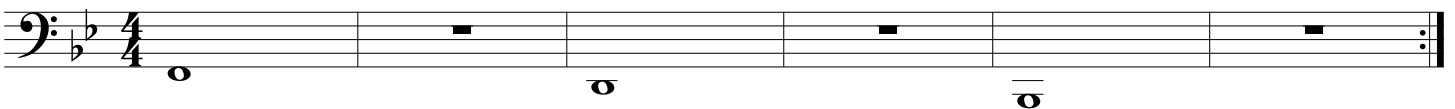
3.01 Half notes and half rests



3.02 Half notes and half rests



3.03 Whole notes and whole rests



3.04 Whole notes and whole rests

Musical notation for exercise 3.04: A single bass clef staff in 4/4 time with a key signature of one flat. It contains four measures: the first two have whole notes, and the last two have whole rests. The piece ends with a repeat sign.

3.05 Get rhythm

Musical notation for exercise 3.05: A single bass clef staff in 4/4 time with a key signature of one flat. It contains four measures: the first two have quarter notes, and the last two have whole notes. The piece ends with a repeat sign.

3.06 "Hot Cross Buns"

Musical notation for exercise 3.06: A single bass clef staff in 4/4 time with a key signature of one flat. It contains four measures: the first two have quarter notes, and the last two have eighth notes. The piece ends with a repeat sign.

3.07 "Jingle Bells"

*continue down to
the next line >>>>*

Musical notation for exercise 3.07: Four staves of musical notation in bass clef, 4/4 time, one flat key signature. Each staff contains a sequence of quarter notes. The piece ends with a repeat sign.

3.08 "The Hawley Hornet Blues" - Dickson

Musical notation for exercise 3.08: Three staves of musical notation in bass clef, 4/4 time, one flat key signature. Each staff contains a sequence of quarter notes with some whole rests. The piece ends with a repeat sign.

3.09 "March Of The Stinky Kids" - Dickson

I'm so stink - y think I'll go to band,

Make the room stink as much as I can!

3.10 "Jingle Bells" with first and second endings

1. 2.

CHAPTER 4: The band will be able to read, count, and play melodies with the pitch concert G.

4.01 New note!

G

4.02 Three note scale

4.03 Help for the brass

4.04 "Twinkle Twinkle Little Star" - W.A. Mozart

4.05 "Repeat Then Move On Blues" - Dickson

CHAPTER 5: The band will be able to read, count, and play melodies with eighth notes.

5.01 Eighth notes and eighth rests

1 + 2 + 3 + 4 + 1 + 2 + 3 + 4 +

5.02 Eighth notes

1 + 2 + 3 + 4 + 1 1 + 2 + 3 + 4 + 1

5.03 Eighth notes

1 + 2 3 + 4 1 2 3 1 + 2 3 + 4 1 2 3

5.04 Eighth notes

1 + 2 + 3 1 + 2 + 3 1 + 2 + 3 4 1

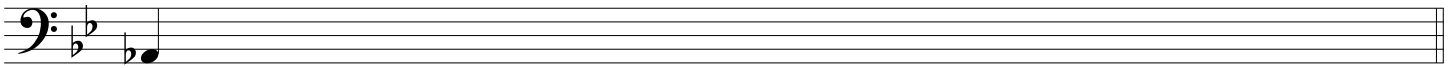
5.05 "Jolly Old St. Nicholas"

5.06 "This Old Man"

5.07 "Cafeteria Food Doesn't Seem Like Actual Food Blues" - Dickson

CHAPTER 6: The band will be able to read, count, and play melodies with the pitch Ab, and dotted-half notes.

6.01 New note!



Ab

6.02 Three note scale



6.03 "Yankee Doodle"



6.04 Dotted-half notes

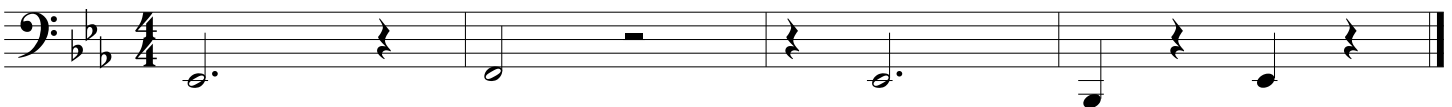
tap your foot with the beat while you play!



6.05 "Jurassic Park" with slurs



6.06 Etude



CHAPTER 7: The band will be able to read, count, and play melodies in 3/4 meter.

7.01 3/4 meter

Musical notation for exercise 7.01 in 3/4 meter. The piece is in bass clef with a key signature of two flats (B-flat and E-flat). The melody consists of ten quarter notes: G2, F2, E2, D2, C2, B1, A1, G1, F1, and E1. The notes are grouped into three measures of three notes each, followed by a final measure with one note. Fingering numbers 1, 2, 3 are written below the first three notes of each group. The piece ends with a double bar line.

7.02 "The Pirates Of The Instrument Storage Room" - Dickson

Musical notation for exercise 7.02 in 3/4 meter. The piece is in bass clef with a key signature of two flats. It consists of two staves. The first staff contains a melody of seven quarter notes: G2, F2, E2, D2, C2, B1, and A1. The second staff contains a bass line of seven quarter notes: G2, F2, E2, D2, C2, B1, and A1. The piece ends with a double bar line.

7.03 "We Wish You A Merry Christmas"

Musical notation for exercise 7.03 in 3/4 meter. The piece is in bass clef with a key signature of two flats. It consists of two staves. The first staff begins with two rests, followed by a melody of ten eighth notes: G2, F2, E2, D2, C2, B1, A1, G1, F1, and E1. The second staff contains a bass line of ten eighth notes: G2, F2, E2, D2, C2, B1, A1, G1, F1, and E1. The piece ends with a double bar line.

7.04 "There's A Hole In The Bucket"

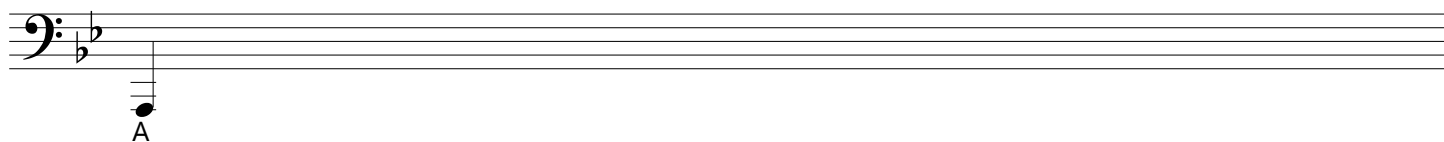
Musical notation for exercise 7.04 in 3/4 meter. The piece is in bass clef with a key signature of two flats. It consists of two staves. The first staff begins with a whole rest, followed by a melody of ten eighth notes: G2, F2, E2, D2, C2, B1, A1, G1, F1, and E1. The second staff contains a bass line of ten eighth notes: G2, F2, E2, D2, C2, B1, A1, G1, F1, and E1. The piece ends with a double bar line.

7.05 Etude

Musical notation for exercise 7.05 in 3/4 meter. The piece is in bass clef with a key signature of two flats. It consists of a single staff with a melody of ten eighth notes: G2, F2, E2, D2, C2, B1, A1, G1, F1, and E1. The notes are grouped into three measures of three notes each, followed by a final measure with one note. The piece ends with a double bar line.

CHAPTER 8: The band will be able to read, count, and play melodies with the pitch concert A, and rhythms with tied notes.

8.01 New note!



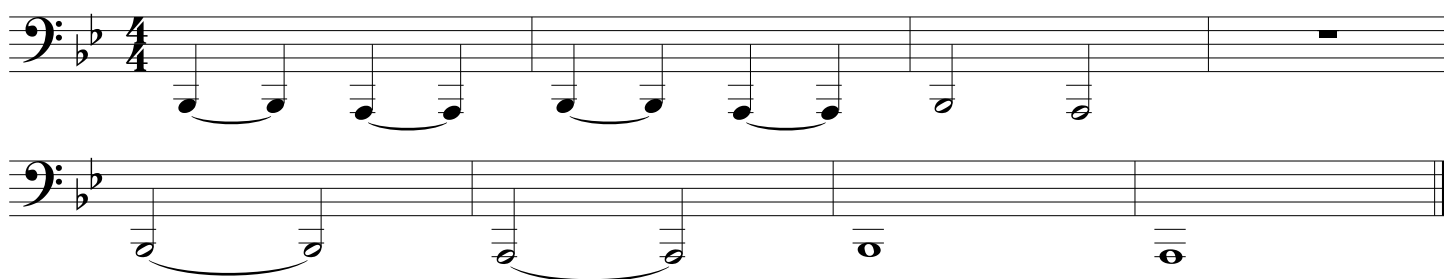
A single bass clef staff with a key signature of two flats (Bb, Eb). A single quarter note is written on the line below the staff, labeled 'A'.

8.02 Etude




A bass clef staff in 4/4 time with a key signature of two flats. The melody consists of quarter notes: G2, F2, E2, D2, C2, B1, A1, G1, F1, E1, D1, C1, B0, A0.

8.03 Ties



Two staves in 4/4 time with a key signature of two flats. The top staff has quarter notes G2, F2, E2, D2, C2, B1, A1, G1, F1, E1, D1, C1, B0, A0. The bottom staff has quarter notes G2, F2, E2, D2, C2, B1, A1, G1, F1, E1, D1, C1, B0, A0. Ties connect notes between the two staves.

8.04 Ties



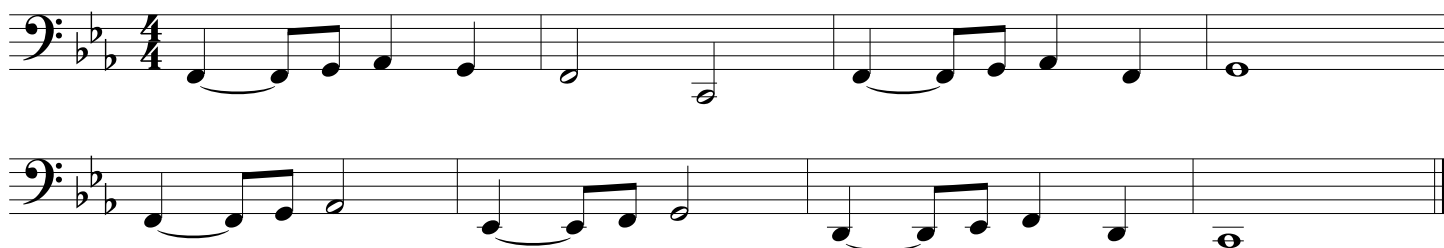
A bass clef staff in 4/4 time with a key signature of two flats. The melody consists of quarter notes: G2, F2, E2, D2, C2, B1, A1, G1, F1, E1, D1, C1, B0, A0. Ties connect notes between measures.

8.05 "Deck The Halls"



A bass clef staff in 4/4 time with a key signature of two flats. The melody consists of quarter notes: G2, F2, E2, D2, C2, B1, A1, G1, F1, E1, D1, C1, B0, A0.

8.06 "Spooky Song" - Dickson



Two staves in 4/4 time with a key signature of two flats. The top staff has quarter notes G2, F2, E2, D2, C2, B1, A1, G1, F1, E1, D1, C1, B0, A0. The bottom staff has quarter notes G2, F2, E2, D2, C2, B1, A1, G1, F1, E1, D1, C1, B0, A0.

8.07 "Ode To Joy" - Ludwig Van Beethoven

Musical notation for "Ode To Joy" in bass clef, 4/4 time. The notation consists of four staves. The first staff begins with a treble clef and a key signature of one flat (B-flat), which is then changed to a bass clef. The melody is written in a simple, rhythmic style with quarter and eighth notes, and a final phrase with a slur and a fermata.

*notes with the Accent mark > should stand out,
so blow a little more air at the beginning of the note.*

8.08 "Accent Blues"

Musical notation for "Accent Blues" in bass clef, 4/4 time. The notation consists of three staves. The first staff begins with a treble clef and a key signature of one flat (B-flat), which is then changed to a bass clef. The melody is written in a bluesy style with quarter and eighth notes, and a final phrase with a slur and a fermata. Accent marks (>) are placed under the first note of several phrases.

CHAPTER 9: The band will be able to read, count, and play melodies with the pitch concert G, and rhythms with ties across the bar line.

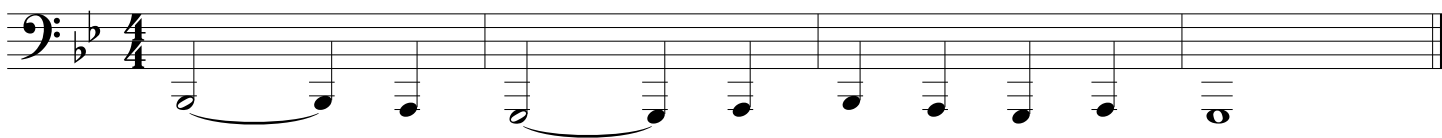
9.01 New note!

Musical notation for "New note!" in bass clef. The notation shows a single note G on a bass clef staff, with the letter 'G' written below the note.

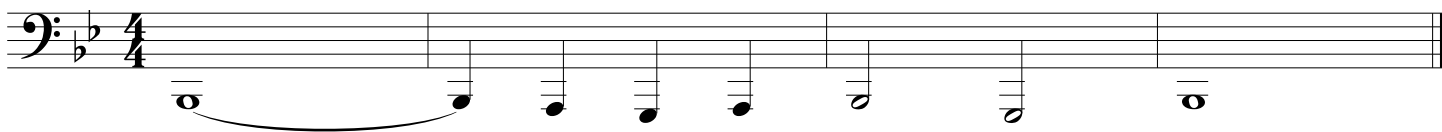
9.02 Five note scale

Musical notation for "Five note scale" in bass clef, 4/4 time. The notation shows a five-note scale in a bass clef staff, with a key signature of one flat (B-flat) and a time signature of 4/4. The scale is written in a simple, rhythmic style with quarter notes.

9.03 Ties



9.04 Ties



9.05 "Summertime" - George & Ira Gershwin



9.06 "Bubble Sheet Blues" - Dickson

